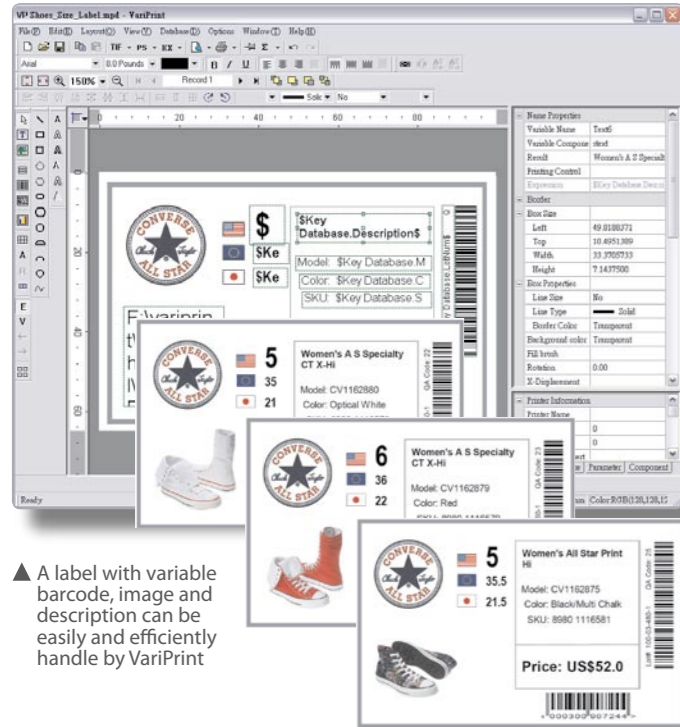
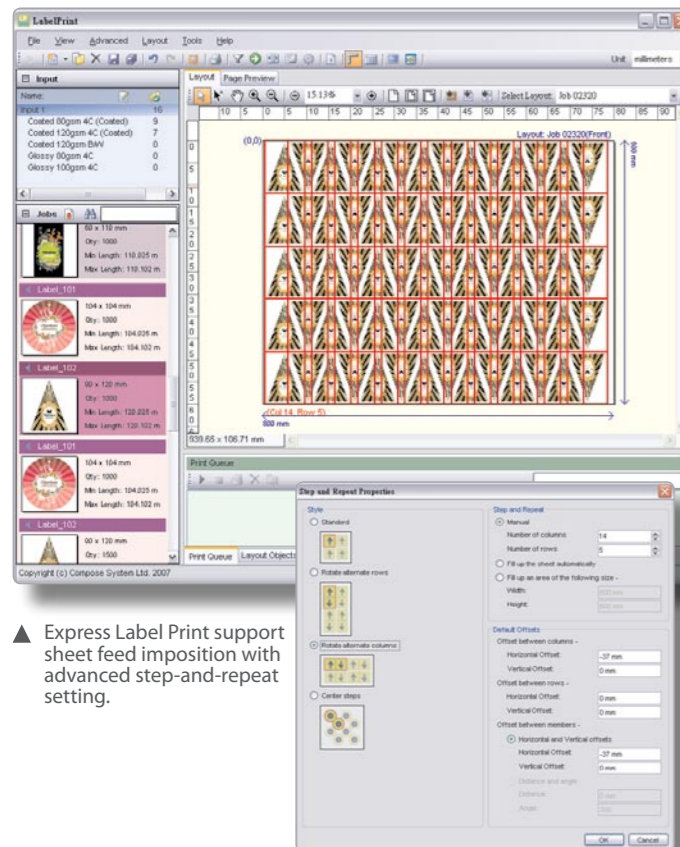


Variable Data Handling for Label Printing

VariPrint is a powerful, high performance and user friendly variable data printing application. You can merge high volume personalized data such as text, image, and barcode into your customized label design, and then print at rated speed of the digital printer. For example in shoes label production, one label layout design will show information like shoe size, style and product barcode. Each label print volume is highly different and short running. It requires higher level of database integration and performance in material combination on sizing requirement, or even multi-lingual for multi-national products. Compose VariPrint is the proven solution on this industry for digital printer.



▲ A label with variable barcode, image and description can be easily and efficiently handle by VariPrint



▲ Express Label Print support sheet feed imposition with advanced step-and-repeat setting.

Modules Highlight

Main WorkFlow



Express WorkFlow

Express WorkFlow is a modular prepress workflow. It provides job monitoring, job submission, job control and module for all prepress functions included ripping, proofing, trapping, imposition, media optimization, and ink-key control...etc

Production Modules



Adobe Distiller

Distill PostScript or Encapsulated PostScript files to PDFs. Support Distiller 6 to 9.



PitStop Server

Pre-flight and certify PDF files with pre-defined profiles and action list using the industry standard Pitstop Server.



Label Print

Label Print is a client application for viewing label jobs, planning imposition and optimizing media usage. It can impose different jobs together on the same layout within a certain user-defined criteria and fit the jobs into the media.



Express RIP

Accurate high-speed ripping via the Compose Express RIP or Harlequin RIP version 5.5 or above..



Express Trap

High-end trapping software available in automatic as well as interactive versions. The automatic version allows trapping of the entire job at the same setting, while the interactive version allows different parameters for different zones in the job.



VariPrint

An application that specialized in variable data printing. It enables users to merge high volume variable data such as text, image, barcode or dynamic chart into your design.

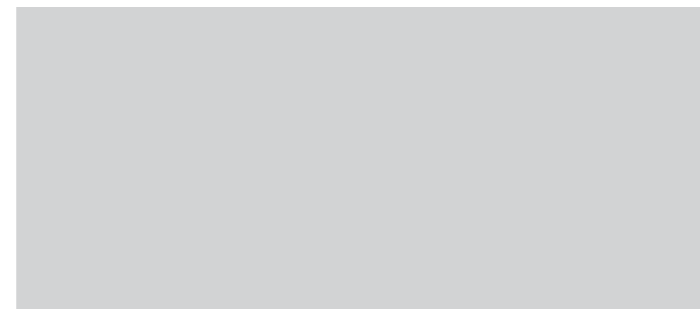
System Requirements

Recommended System Requirements:

CPU: Dual Core Xeon Pro 2.0 GHz or above
 RAM: 4GB RAM
 HD: 150GB SAS 15RPM Hard Drive
 OS: Windows 2003 Server / SBS Server

To learn more about solutions from Compose:

Visit www.compose.com.hk



Production Family
 A seamless approach to
 Label Production

Express Label Print

Express Label Print delivers an outstanding performance solution to label printers. It helps to shorten production time and reduce human errors, not only provides an cost effective estimate layout but working together with Express WorkFlow it will provide you additional functionality such as preflight, trapping and load balancing. With the new variable printing module, VariPrint, we are making variable label printing a simple exercise. Only a few steps to define variable data fields, VariPrint will do all the work for you while your label is printing. This remarkable process will help to bring out higher productivity to meet the ever changing demand of today's digital label printing industry.



- Open System architecture
- Integration with MIS system
- Support JDF/JMF job input
- Provides cost effective estimate layout
- Imposition for multiple labels
- Provides order-based job submission
- Provides production job sheet with logistic information
- Enhance Variable Data Handling
- Design for digital devices
- Workable for traditional press



compose

An Open Future

www.compose.com.hk www.compose.co.uk www.composeusa.com

Copyright © 2009 Compose. All rights reserved.
 Compose logo is the trademark of Compose System Limited and its subsidiaries.
 All other brands and product names are trademarks or registered trademarks of their respective owners.
 All specifications and price changes are subject to change without notice.
 Compose cannot accept liability for any loss or damage arising from the use of information or particulars in this document.

Express Label Print

Express Label Print is a solution designed for digital label printers who print a lot of short-run static or variable-data labels. It comes with a web based job submission utility as standard, but also allows customers to have jobs submitted from different ERP or B2C printing website front end.

Database approach for job management

Jobs once reach Express Label Print, they will be filed according to its print requirements, like delivery time, paper type, finishing method as well as print runs. All this information are save in a SQL database. Operator can fetch out a list jobs which have similar printing requirements. This will enable production to be built around the delivery time with optimization is made on paper usage and finishing process. This database approach will help to streamline production in a logical manner.

Specially designed for roll fed printers / presses

Express Label Print offers two distinctive imposition logics on roll and sheet fed labels. For roll form output, when a label is selected, Express Label Print will automatically high-light jobs which can be packed together and the final print length is roughly equal. If a single selected label, Express Label Print will fit it across the width of media, making step-and-repeat like a standard feature. If multiple labels are selected, it will calculate the best fit layout both vertically and horizontally. For sheet fed printer, Express Label Print will work out the best fit to any given size of media, allows alternative media to be optimized with a simple instruction. A set of advanced tool is also available for step-and-repeat, enable better fit to take place for irregular shapes. Express Label Print intends to put productivity and cost effectiveness as priority, and allow working with any selected labels.

Design for Digital Printer, support Offset or Flexo output

You can define the maximum print length per click of your digital printer. Express Label Print will propose the solution base on this value to minimize the number of click, hence minimize the printing cost. With Express WorkFlow runs in background, Express Label Print can take advantage of the build-in features to generate printable PDF on plate for traditional offset or flexo printing.

A PDF Native solution workflow

Express Label Print is a native PDF solution, together with EWF3, customer can easily build a PDF workflow. Through Job Submission or your MIS system via JDF/JMF, jobs are directed to workflow which will be process automatically according to printing processes that are reflected on a intuitive GUI modular based workflow.

Support pantone color

Express Label Print is independent to any color requirement on the label; jobs are distilled into PDF as the internal file format. Jobs are imposed together in PDF containing all the basic characteristic of each job, as well as carrying the color values. It will be up to the RIP when output to filter the Pantone color into CMYK, or print with that particular pantone color on the press. The matching of the pantone color can be user definable. Making this a very powerful solution and independent to any output devices in the market.

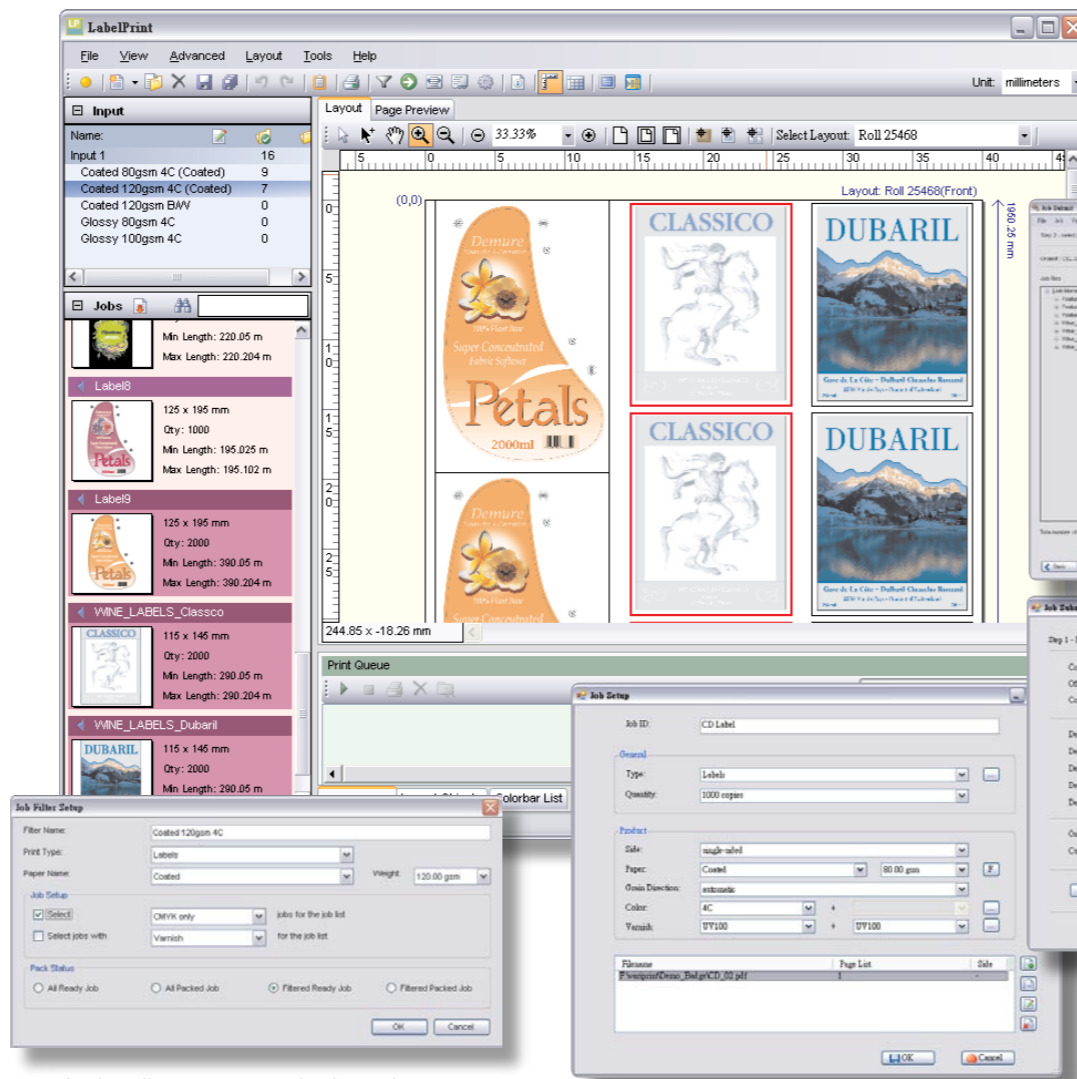
Easy to build query

Express Label Print allows you to construct different search queries to fit your production requirement. Anyone without database knowhow can easily build a list of search queries by using its build-in intuitive interface.

Modular design adapting to the way you work

Express Label Print is designed to be a modular application to give you the maximum flexibility and scalability inside Compose Express WorkFlow, offers advanced job tracking, job submission and remote job monitoring; you can manage the jobs in your system from wherever you are. Express WorkFlow provides modules for all major functions, including PDF preflight, trapping, load balancing, ink optimization on whichever output devices that you are using. This ensures you get the most from your existing system.

▼ Express Label Print provides a WYSIWYG user interface for placement of jobs



▲ Job Filter allows you to search jobs easily

Label Imposition and Automatic Adjustment

Express Label Print is a client application for viewing label jobs, planning imposition and optimizing media usage. It can impose different jobs on the same layout within a certain user-defined criteria. Express Label Print will also automatically adjust the vertical gutter and horizontal margin to maintain a constant frame size and centered label within its silted roll when performing for a web printing device.

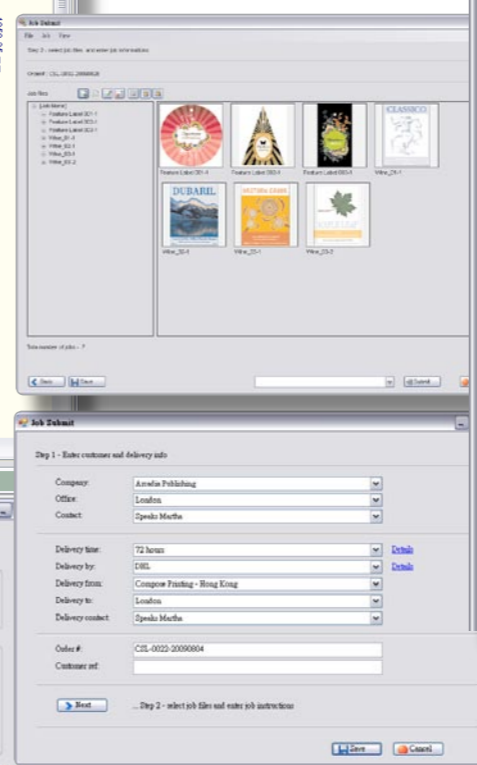
Submit Jobs via MIS System

Express Label Print supports JDF/JMF files. It can receive jobs in JDF/JMF format from any ERP system, and the processing instructions contained within the JDF will configure some of the modules within the workflow as the job ticket is passing through the system. It can also generate JDF files for printing presses, folding and cutting machines.

Job Submission on your Desktop

Express Label Print's Job Submission is made easier than ever with the Job Submission application on your desktop. The Job Submission software allows user to create an order, add multiple jobs into the same order, enter job related information, and submit job files into Express WorkFlow. Once an order is submitted, it will allow users to browse all the orders that are currently in the system and to view their production status.

▼ Express Label Print manages job files and job informations in order-based. It enables user to submit all the jobs in the same order by one submission.



▲ Enhanced Job Submission allows user to create an order, add all the jobs into the order, enter job related information, and submit job files into Express Label Print.

Management report

Every time Express Label Print completes its selection process, it will produce a customizable job sheet, detailing out the contents of the job, paper information, the job numbers, and their print runs etc. On multiple labels, logistic information, thumbnail of each label are shown, ensuring there is no mistake should happen from production to delivery. Thanks to the database runs behind the Express Label Print, it can generate production management report.

Monitoring and Tracking Job Status

Express Label Print enables user to search for the job and monitor its production status for the submitted job. Users can also re-submit a job if there are changes in the print or finishing instructions.

Assignment of Printing instruction

In Express Label Print, print instruction can also be assigned during job submission. User can define the paper information as well as finishing processes that will apply on the job. Print instructions are useful for defining the print criteria and filtering job in database with similar print instructions to be grouped for imposition and media saving.

Solution Sheet Checker

The solution sheet checker of Express Label Print presents you the cost effectiveness of the proposed solution for the selected label. User can check the layout setup for the ordered quantity, the actual printing quantity, coverage, vertical gutter and unused space. Intuitive symbols tell you if a solution is passed or failed because of wastage is over tolerance.

◀ Solutions Sheet Checker provides an overview of cost effectiveness of the proposed solution



| Label Print Job Sheet | | | | | | | | | | | | | | | | | | |
|---|---|----------|-----|---------|---------|--------------|-------------------------|--------------|-------------------|---|------------|-------------------------|---------------|-------------------------|-----------------------|---------------|----------------------|-------------|
| Imposition Information | | | | | | | | | | | | | | | | | | |
| ID: | 20090724R330 | | | | | | | | | | | | | | | | | |
| Name: | Output R330 | | | | | | | | | | | | | | | | | |
| Number of Order: | 3 | | | | | | | | | | | | | | | | | |
| File generation: | 2009-07-24, 14:39:08 | | | | | | | | | | | | | | | | | |
| Print & Finishing Instructions | | | | | | | | | | | | | | | | | | |
| Paper name & weight: | Glossy, 80.00 gsm | | | | | | | | | | | | | | | | | |
| Roll width: | 80.00 gsm/mm | | | | | | | | | | | | | | | | | |
| Repeat Height: | 822 mm | | | | | | | | | | | | | | | | | |
| Colorants: | 4C | | | | | | | | | | | | | | | | | |
| Number of Copies: | 50 | | | | | | | | | | | | | | | | | |
| Varnish: | None | | | | | | | | | | | | | | | | | |
| Site mark: | 15 mm x 0.01 mm | | | | | | | | | | | | | | | | | |
| Eye-Mark: | NIL | | | | | | | | | | | | | | | | | |
| Production & Delivery Summary | | | | | | | | | | | | | | | | | | |
| # | Order ID | Customer | Ref | Ord Qty | Act Qty | Delivered by | | | | | | | | | | | | |
| 1 | 20090724-0001 | Compose | | 300 | 300 | 2009-07-25 | | | | | | | | | | | | |
| 2 | 20090724-0002 | Compose | | 500 | 500 | 2009-07-25 | | | | | | | | | | | | |
| 3 | 20090724-0003 | Compose | | 200 | 450 | 2009-07-25 | | | | | | | | | | | | |
| <table border="0"> <tr> <td>Order ID: 20090724-0002</td> <td>Job ID: L002</td> </tr> <tr> <td>Customer: Compose</td> <td>Number per repeat: 10</td> </tr> <tr> <td>Office: HK</td> <td>Horizontal margin: 9 mm</td> </tr> <tr> <td>Contact: John</td> <td>Vertical gutter: 2.2 mm</td> </tr> <tr> <td>Ordered quantity: 500</td> <td>Varnish: None</td> </tr> <tr> <td>Actual quantity: 500</td> <td></td> </tr> </table> | | | | | | | Order ID: 20090724-0002 | Job ID: L002 | Customer: Compose | Number per repeat: 10 | Office: HK | Horizontal margin: 9 mm | Contact: John | Vertical gutter: 2.2 mm | Ordered quantity: 500 | Varnish: None | Actual quantity: 500 | |
| Order ID: 20090724-0002 | Job ID: L002 | | | | | | | | | | | | | | | | | |
| Customer: Compose | Number per repeat: 10 | | | | | | | | | | | | | | | | | |
| Office: HK | Horizontal margin: 9 mm | | | | | | | | | | | | | | | | | |
| Contact: John | Vertical gutter: 2.2 mm | | | | | | | | | | | | | | | | | |
| Ordered quantity: 500 | Varnish: None | | | | | | | | | | | | | | | | | |
| Actual quantity: 500 | | | | | | | | | | | | | | | | | | |
| <table border="0"> <tr> <td colspan="2">Delivery Address</td> </tr> <tr> <td>Street1:</td> <td>Unit 301-306, Building 14, 8 Science Park West Avenue</td> </tr> <tr> <td>Street2:</td> <td></td> </tr> <tr> <td>City:</td> <td>HK</td> </tr> <tr> <td>State:</td> <td>NIL</td> </tr> <tr> <td>ZIP/Postal code:</td> <td>Country: HK</td> </tr> </table> | | | | | | | Delivery Address | | Street1: | Unit 301-306, Building 14, 8 Science Park West Avenue | Street2: | | City: | HK | State: | NIL | ZIP/Postal code: | Country: HK |
| Delivery Address | | | | | | | | | | | | | | | | | | |
| Street1: | Unit 301-306, Building 14, 8 Science Park West Avenue | | | | | | | | | | | | | | | | | |
| Street2: | | | | | | | | | | | | | | | | | | |
| City: | HK | | | | | | | | | | | | | | | | | |
| State: | NIL | | | | | | | | | | | | | | | | | |
| ZIP/Postal code: | Country: HK | | | | | | | | | | | | | | | | | |

▲ Express Label Print can produce a printable job sheet, detailing out the production and logistic information of the jobs.