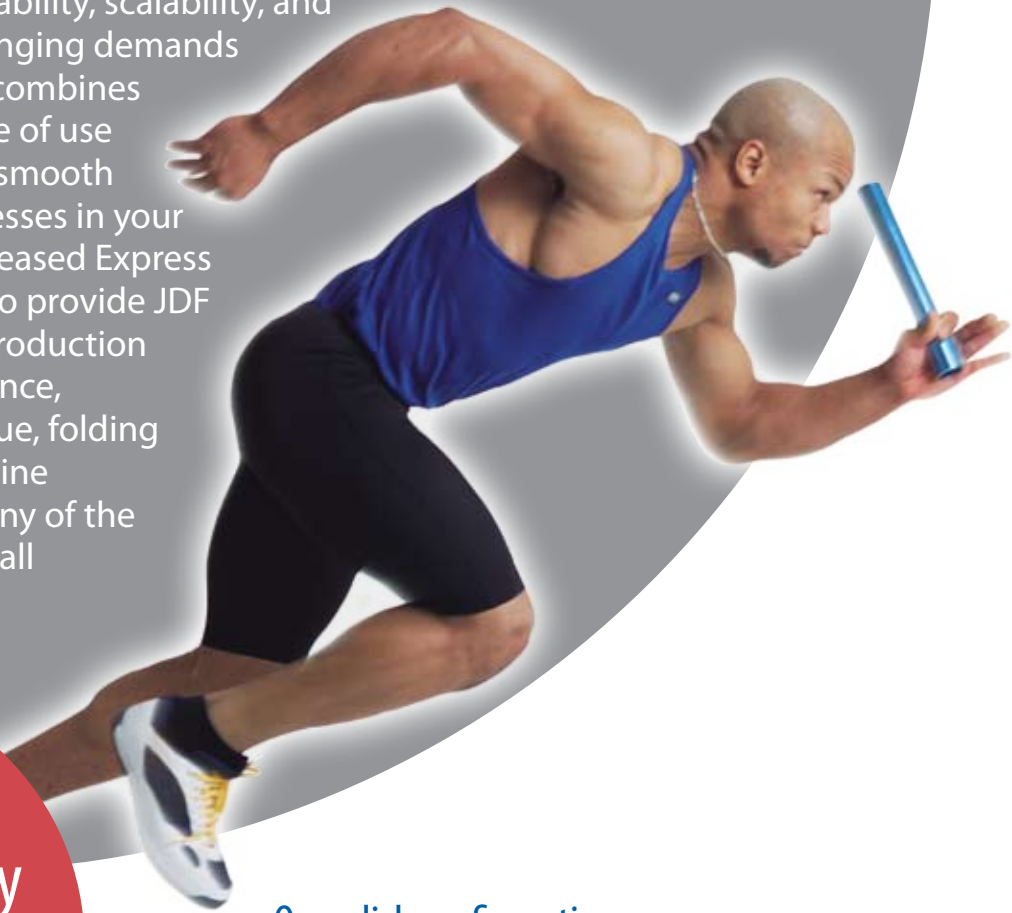


Express WorkFlow provides reliability, scalability, and efficiency to meet the ever changing demands of today's prepress industry. It combines practical functionality with ease of use ensuring tight integration and smooth data delivery between all processes in your prepress workflow. The new released Express WorkFlow has been extended to provide JDF support at every stage of the production process such as ripping preference, imposition method, ink key value, folding instruction, binding and guillotine instruction, etc. In addition, many of the workflow features and the overall performance have also been greatly improved.



## Workflow Family

A seamless approach to  
prepress workflow

## Express WorkFlow

### Modular design adapting to the way you work

Express WorkFlow is a modular solution designed to give you maximum reliability and scalability. At its heart is the Express RIP – a fast, flexible version of the Harlequin RIP tailored to provide the high levels of performance and productivity you demand. Express RIP accepts a wide range of input formats – including PostScript, PDF, EPS, PCL and 1-bit TIFF and supports over 200 output devices. Express WorkFlow offers browser-based job monitoring, job submission and job control, you can manage the jobs in your system from wherever you are. Express WorkFlow provides modules for all major functions, including ROOM proofing, trapping, imposition, ink and media optimization, ink-key control – and whichever imagesetter, platesetter or proofer you're using, our expertly tuned output drivers will ensure you get the most from your system.

### One-click configuration

Express WorkFlow configurator lets you set up complex workflows in just a few minutes. Each module is represented by an icon in the toolbar and with a single click can be positioned and connected to other modules. When your workflow is completed you can save your configuration and then move quickly and easily between saved workflows to make changes in both local and remote systems.

### Remote Job Management

Express WorkFlow comes with a Mac and a PC application for job submission and job tracking. Users select job files and configure the workflow, remotely, before submitting the job files to the workflow for automated processing. In addition, jobs held for approval can also be released, if approved, or deleted, if not, from the remote client application.

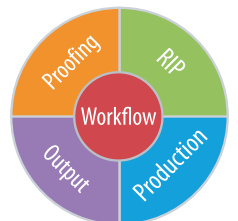
### End-to-end PDF workflow

Express WorkFlow gives you all the benefits of PDF workflow – faster, more reliable RIP processing, improved interaction with clients and the security that comes from using this widely-used standard. The options for PDF workflow combine the best of third party applications with Compose System's own developments. Incoming PostScript files are converted to PDF files using Adobe Distiller and preflighting is handled by Enfocus PitStop Pro. Certified PDF files are then rastered by Express RIP as high-res separations for production or as low-res composite for soft-proofing.

**compose**

An Open Future

[www.compose.com.hk](http://www.compose.com.hk) [www.compose.co.uk](http://www.compose.co.uk) [www.composeusa.com](http://www.composeusa.com)



# New Features for Express WorkFlow 3

## JDF Support

Express WorkFlow now supports JDF files. Express Workflow can receive jobs in JDF format from MIS system, and the processing instructions contained within the JDF will configure the individual modules as the job is passed to the workflow. It can also generate JDF files for printing presses, folding and cutting machines.

## Auto-Versioning Tool

Express WorkFlow now supports automated versioning. Multi-lingual jobs can be submitted with either one file per language, or all languages within a single PDF, and it will automatically merge the language separations with the black channels for CTP output, or reconstruct a complete set of separations for proof output.

## Press Ink Optimization

Express WorkFlow has now integrated the Compose InkScript Optimizer application, allowing users to standardize their RGB or CMYK files, improving the printability, and reduce ink coverage while maintaining the original colour and quality for images and for job PDFs.

## InkScript for Press Ink Control

Express WorkFlow has now integrated the Compose InkScript module, providing ink-key information in either CIP3 or JDF format, or by providing the ink-key charts in PDF file or windows printer output. This helps to reduce press setup time and improves the consistency over the print runs.

## Enhanced Flatworking Productivity

New released flatworking module Plate Controller allows easy plate layout for labels as well as standard jobs. It provides features such as front and back alignment for different work-styles, and advanced step-and-repeat for standard, packaging and label jobs.

## Gapfinder 2 Support

Express Workflow now fully supports Gapfinder 2. Gapfinder is an unique and easy-to-use application specifically developed to provide significant production benefits to the traditional narrow web printers.

## Simplified Job Submission

Express WorkFlow Remote Job Manager supports both Mac OS X and Windows PC for job submission and job approval. Users can define all workflow settings as template for quick one-click submission, they can also configure the job setting or workflow settings before submission.

## Remote Job Tracking

Remote Job Tracking for both Mac OS X and Windows PC for tracking the processing status of your jobs. Users can search for their jobs using their user name, a time period, or by job name.

## Configure While Print

Users used to have to stop the workflow before they can create new settings. With Express WorkFlow 3, users can create new settings even when workflow is started processing other jobs., making it possible to create settings when needed.

## Load Balancing for Maximum Productivity

Remote Load Balance module to load balance job files to multiple modules, such as the RIP or DI Proof module, speeding the throughput while keeping the full utilization of all modules.

## Distributed Processing

Express WorkFlow now supports Remote Service to distribute the tasks to a number of computers to reduce the overall processing time. For example, if the RIP is the bottle-neck of your workflow, you can simply use the Remote Service with additional Express RIP and the workflow will distribute the ripping process to the two RIPs.

## Fault Tolerance

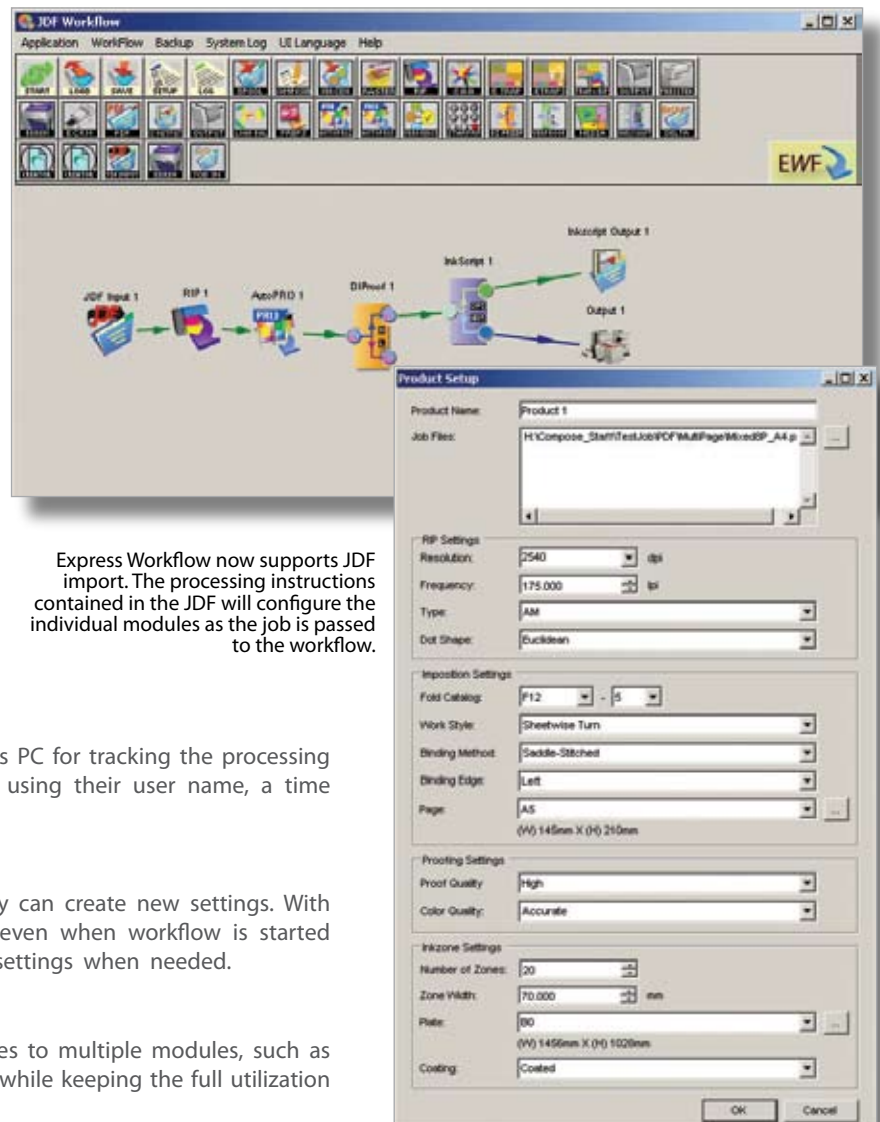
With the Express WorkFlow Web Service and Remote Load Balance module, fault tolerance is also provided - if a module is down, Express WorkFlow will only send new jobs to the other running modules.

## Powerful Imposition Packages

Much improved imposition software PRI Station and PDF Imposition for both sheet-fed and web presses. Users have complete control on every aspect of an imposition signature, including the placement of job pages, left and right gutters, and front and back imposition margins. In addition, PRI Station and PDF Imposition also comes with a much enhanced Flatwork tool for imposing multiple jobs or step-and-repeat for creating complex imposition.

## Automated Imposition

Fully automated imposition modules for both 1-bit and PDF job files, requiring no manual intervention. Users can preview completed imposition, verify that it is done correctly, before the job files are sent to the proofer or to the CTP machines



Express Workflow now supports JDF import. The processing instructions contained in the JDF will configure the individual modules as the job is passed to the workflow.

## Benefits

### Open System

Express WorkFlow takes an open System approach to solve production issues; it offers the possibility for customers to integrate their preferred application, enhance the value of the workflow to give better productivity. It doesn't have to be a Compose product, bring it to Compose, we will offer the means to integrate them together.

### Automation

What is needed most in modern production system - automation! Compose WorkFlow gives you PDF creation, preflighting, trapping, proofing, imposition, and plate imaging fully automated.

### Easy to configure

Express WorkFlow's modular design easily adapts to the way you work providing maximum reliability and scalability. Prepress workflows can be setup simply with one-click configuration.

### Accessibility

Accessible via an internet browser Express WorkFlow's database holds information about all jobs in the system. Submit, monitor and control jobs locally or remotely from any desktop computer.

### High Performance

Built on Compose's powerful Express RIP, it provides advanced screening, accepts different file format, trapping and high productivity.

### Connectivity

Managing your prepress workflow with ease, Express WorkFlow supports over 200 output devices. Compose also offers individually designed drivers for most of the popular inkjet printers, colour laser printers, imagesetters and platesetters.

### Scalable

Express WorkFlow can scale from one to four RIP engines and still be fully controlled by a single client interface. An open system format allows you to add or replace imaging devices easily without changing your front-end investment.

### Cost Saving

Express WorkFlow can take control of the entire prepress process automatically, reducing labour costs. The highly accurate and productive proofing solutions also helps to reduce material cost.

### Reliability

Express WorkFlow is a proven system with customer base well placed in every corner of the world. It has won a lot of praise from customer for its ease of use, productivity, connectivity and flexibility.

## Features

### Input

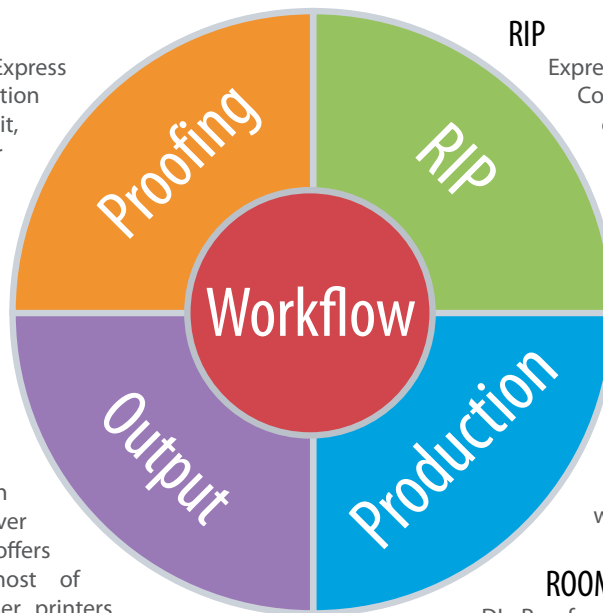
Express WorkFlow handles a wide range of input formats including PostScript, PDF, EPS, PCL and 1-bit TIFF. Using drag-and-drop or remote submission, jobs are directed to hot folders, which are continuously monitored.

### Preflighting

Express WorkFlow uses Enfocus PitStop for preflighting of incoming PDF files. PitStops Preflight profiles and action lists check critical PDF attributes and automatically correct common errors.

### Trapping

Express Trap module is a powerful raster based trapping program, which provides Express WorkFlow users with high quality automatic trapping on the fly. In addition, interactive zonal trapping is available through a user interface allowing you to customize variable trapping needs.



### RIP

Express WorkFlow is built around the latest Compose Express RIP providing high levels of performance and productivity. Express RIP easily handles today's prepress industry file formats.

### Imposition

Using the imposition modules such as PDF Imposition and PRI Station, Express WorkFlow handles both post RIP raster and PDF imposition with ease. Jobs can be imposed automatically or via standalone stations. Express WorkFlow also gives you the option to continue working with existing imposition packages.

### ROOM proofing

DI Proof module supports ROOM Proofing (RIP Once, Output Many) eliminating the need to RIP job twice. DI Proof downsamples high resolution separated data then recombines them to produce an ICC colour managed file for printing on a lower-resolution proofer, guaranteeing data integrity.

### Job management

Client/Server architecture allows both staff and clients to track and monitor production of jobs in the system anytime, anywhere. Jobs can be submitted locally or remotely from any desktop computer. View current workflows from a browser window and can gain direct access. Your clients can view composite PDF files for soft proofing and approve their jobs quickly and efficiently.

### Output

No matter what existing output devices you have in your current prepress system. Express WorkFlow can seamlessly integrate into your environment with modules that support over 200 imagesetters, platesetters and proofers.

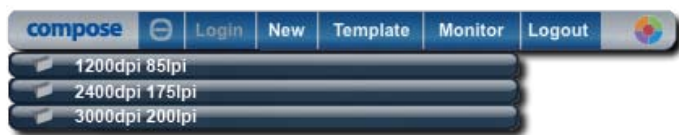
# Express WorkFlow handles all your input and print requirements

## Processing jobs in a wide range of formats

Express WorkFlow handles input data in most popular formats – including PostScript, PDF, EPS, PCL and 1-bit TIFF. Using drag-and-drop or save, job streams are directed to hot folders which are continuously monitored. Jobs can also be submitted using the Web Application. The Spool folder takes single file jobs and the Composer Module manages the delivery of jobs with multiple PostScript or PDF files into the workflow. Raster Import handles ripped halftone files for processing by Express WorkFlow – acceptable formats include any 1-bitTIFFs, NetFlow Raster and Harlequin PageBuffer.

## Job Submission from your Desktop

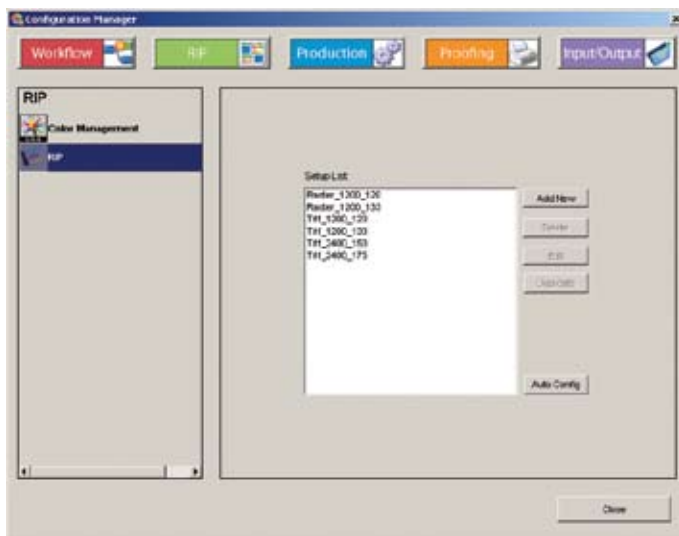
Job Submission is made easier than ever with the Compose Job Submission Widget, which sits right on your desktop. Drags a file to a template, enter the job ID and job name, then press Submit and the job files will be sent directly to the workflow.



Job Submission Widget

## Easy Configuration

Express WorkFlow allows you to pre-define all your settings so you can select them from the remote Job Submission application. You can create new setups even when Express WorkFlow is processing other jobs. And with one click of the button, you can import all your RIP settings without having to create new setups.



## Remote management - anytime, anywhere

Accessible through an internet browser, Express WorkFlow's database holds all job information in the system – so you can submit, monitor and control jobs locally or remotely from any desktop computer. You can get a complete picture of current workflows in the browser window and by clicking on any point of the process you can gain direct access to the local job manager – providing exactly the same controls in the browser that you have in Express WorkFlow itself.

## Automated Imposition

Creating an imposition can be time-consuming and tedious work. With the Express WorkFlow and the Compose imposition solutions, you can impose 1-bit or PDF files automatically with no hassle. You can even preview the imposition before you create the color proofs, saving you time and money.

## Comprehensive Proofing Solutions

Express WorkFlow supports a comprehensive range of proofing solutions for both 1-bit and PDF jobs. For 1-bit proofing, Compose offers a range of solutions from high quality to high speed proofing. For PDF files, Express WorkFlow provides the precise color management engine from the Global Graphics ScriptWorks to give you high quality proofs.

## Support for over 200 output devices

Compose has over fifteen years experience in digital colour and imagesetting, designing interfaces for inkjet plotters, laser printers, copiers, imagesetters and platesetters. Through close technical co-operations with many vendors, we have fine-tuned Express RIP drivers for many different output devices. We have established a strong customer base with over 12,000 Express RIP installations worldwide. We offer a comprehensive range of drivers for all popular printers, imagesetters and platesetters – ensuring maximum productivity and quality in your prepress system.

## Flexible delivery of soft proofs to your clients

By adding the Internet module to your workflow you can set up automated production of composite PDF files for soft proofing so your clients can approve their jobs quickly and efficiently ... even down to the checking of actual dots! Express WorkFlow gives you the facilities to deliver PDF files for client approval via email or FTP download.

## Remote printing options to let you run proofs anywhere

With Express WorkFlow you can use the internet to deliver jobs to wherever they need to be printed - to your customers or to their remote site. The Compose Express RIP can be set to generate raster PDFs which are then uploaded to a FTP site for download to the target location for production of color accurate proofs – saving delivery costs and shortening the approval cycle.


## Controlling output with Raster PrintStation – locally and over the internet


Raster PrintStation gives you full ability to control and monitor jobs in the output queue. Taking rastered data in TIFF, NetFlow Raster or Harlequin PGB format from the workflow, Raster PrintStation provides you with facilities to set up your output device and lets you preview, hold and release queues, redirect jobs and reorder jobs in the output queue either locally or remotely through a standard internet browser. Additional functions for cropping, tiling and step-and-repeat are also provided.

## Optimizing ink usage on the press


Express WorkFlow's InkScript module gives you the option to analyze jobs for their colour profile and create CIP3 PPF files for the press to manage ink levels in individual channels. Accepting any 1-bit TIFF files, InkScript will take data from a wide variety of sources including Express WorkFlow raster generation modules such as Express RIP, Raster Import, DI Proof, PRI Station, AutoPRI and Plate Controller.

## Production Modules


 **Adobe Distiller**  
Distill PostScript or Encapsulated PostScript files to PDFs. Support Distiller 6 to 7.

 **Jaws Creator**  
Distill PostScript or Encapsulated PostScript files to PDFs using the Global Graphics Jaws engine.


 **PDF Page Combine**  
Combine multiple separation PDFs into pre-separated PDFs.


 **PDF Page Splitter**  
Split multiple-page PDFs to single-page PDFs based on page ranges specified in filename rule.


 **PitStop Server**  
Pre-flight and certify PDF files with pre-defined profiles and action list using the industry standard Pitstop Server.


 **PDF Imposition / PRI Station**  
A application for imposing PDF / 1-bit Raster files. Support multiple layouts per job. Intuitive user interface allows easy configuration of complex imposition scheme. Also provide simple flatwork functions to gang up odd jobs for single-sided or double-sided printing.


**New!**


 **Plate Controller**  
Flatworking software supports double-sided sheets for 1-bit post-RIP files. Automatic front and back plate alignment makes it easy to align jobs on front and back sheet. Provides flexible features such as step-and-repeat and double-burn. A PDF version Plate Controller is also available.

 **Flatout Express**  
Media saving software supporting 1-bit post-RIP files. User can manually gang up jobs until the selected plate is filled.

 **Remote Service**  
Remote Express WorkFlow modules such as DI Proof, AutoPRI 2, Express RIP etc. via TCP/IP network.


 **Distribute Jobs**  
Distribute input files to various connected modules based on filename rules.


 **Load Balance**  
Connect to multiple Output module and send raster files to connected modules in round-robin fashion for load-balancing output devices.

 **Plate Selector**  
Select action for plates based on input plate sizes. For example, larger plates may need CIP3 data generated, but smaller plates need only be sent to Output module for output.


## Web Press Production Modules


**New!**


 **GapFinder 2**  
A media save application for web press production. GapFinder analyses print jobs against printing cylinder and re-arranges job images on the plate in order to eliminate press cylinder gaps effect and print in the most economical way.


 **Web Growth**  
Generate web-growth compensated raster files for your web presses. Compensation can be applied in either horizontal or vertical direction. Support up to 16 separations.


## Proofing Modules


 **CMM**  
ColorPro-enabled Express RIP or Harlequin RIP provides accurate high-speed proofing for PostScript and PDF files

 **Content Proof**  
Fast, entry-level 1-bit proofing module for generation of PDF files, export to Windows Printer or large format inkjet plotters.

 **DI Proof**  
High quality 1-bit proofing module for generation of PDF files, proofing to Windows Printer, or outputting to large format inkjet plotters.


 **Star Proof**  
Contract quality 1-bit dot-proofing software with unique ICS2 colour calibration tool which is the best proofing solution in the market.


 **Visual Proof**  
High quality soft-proofing software for 1-bit raster images. Preview is provided at 11 sizes from 0.78% to 800% locally as well as remotely. Flexible tools provides to measure frequencies, reverse dot gain, delete or merge separations, mirror or rotate preview, specify accurate preview colour, as well as preview front and back surfaces together.

 **PDF Preview**  
Simple soft-proofing module for previewing pre-separated and composite PDF files in composite colour.


## RIP & Trapping Modules

**New!**

 **Express RIP**  
Accurate high-speed ripping via the Compose Express RIP or Harlequin RIP version 5.5 or above..


 **Express Trap**  
High-end trapping software available in automatic as well as interactive versions. The automatic version allows trapping of the entire job with the same set of high-end trapping parameters, while the interactive version allows different trapping parameters for different zones in the job.

**New!**


 **JDF Input**  
Support JDF files. Ensure correct handling of each job at every stage of the production process and eliminate errors and miscommunication.

## Pressroom Modules

**New!**

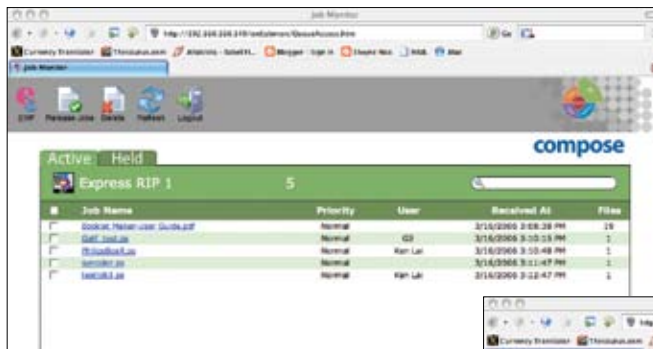
 **Express InkScript**  
An ink key presetting module which read 1-bit tiff file from RIPs, analyzes and generates CIP3 files for the ink control unit. It can also export the calculated ink density value in PDF file or print out on Laser printers for users to base on the hard copy to preset their presses. Advanced IS Connect and IS Connect Loop options are also provided to integrate with press console.

**New!**

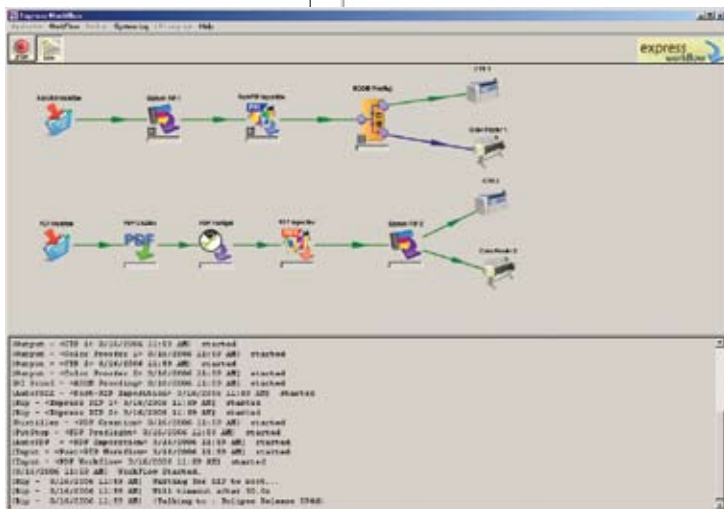
 **InkScript Optimizer**  
Compose InkScript Optimizer is a Preflight, Standardization and Optimization software for four color separation files. It allows producing documents for problem-free printing. It can control and improve the printability of files containing 4 color separations by optimizing the separation according to the actual process/press/paper.



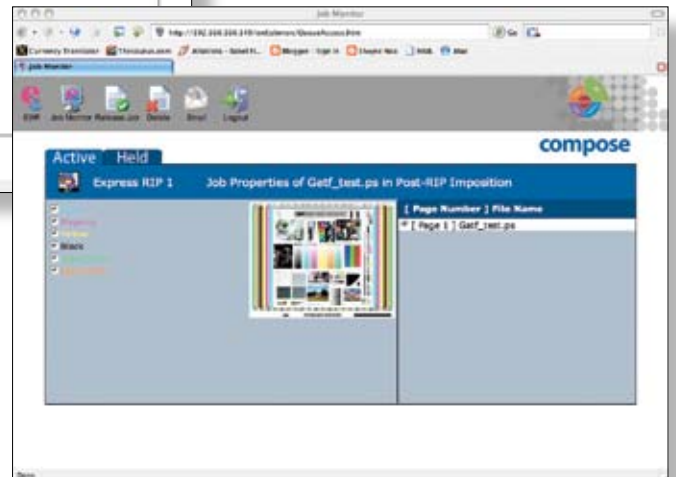
Easy to use job submission software for both Mac OS X and Windows PC, allowing users to select job files and select RIP, Imposition, proofing, plus other settings remotely from their own workstation.



Remote Browser-based Job Monitor allows users to view and approval processing jobs



Much Simplified Express Workflow 3 workspace



## System requirements

### Basic requirement:

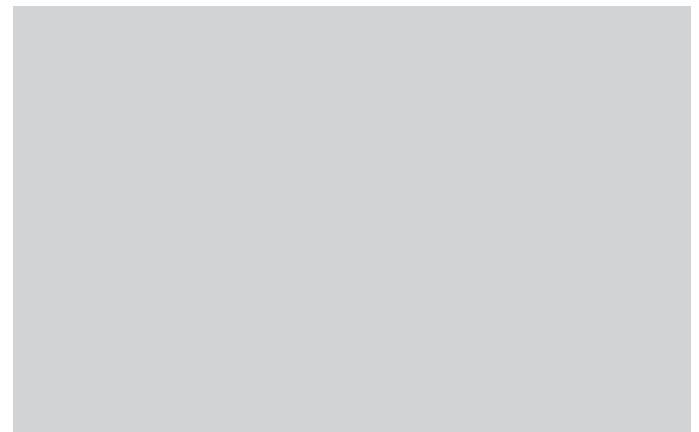
- CPU: Intel Pentium IV 2.8GHz
- Memory: 1GB RAM
- Hard Drive: 80GB Ultra320 SCSI Disk

### Recommended:

- CPU: Dual Xeon 3.0GHz
- Memory: 2GB RAM
- Hard Drive: 80GB Ultra320 SCSI Disk

### Recommended operating system:

Windows 2003 Server



Copyright 2008 Compose. All rights reserved.  
 Compose logo is the trademark of Compose System Limited and its subsidiaries.  
 All other brands and product names are trademarks or registered trademarks of their respective owners.  
 All specifications and price changes are subject to change without notice.  
 Compose cannot accept liability for any loss or damage arising from the use of information or particulars in this document.