

InkScript Connect is a powerful solution to link-up most of common press console to receive Ink Key preset value via Ethernet. It can read CIP3 data files from selected front end prepress system, and deliver accurate Ink Key value to match press characteristics without operator interference. It offers the most flexible conditions for ink key presetting, especially on a multiple presses environment. Together with IS Connect Loop option, it enables the automatic measurement and evaluation of control strips, as well as the continuous transmission of computed correction values directly to the printing machine during production. InkScript Connect works with wide range of printing consoles. It can totally improve your productivity by shortening setup times, reducing paper and ink wastage, and turning your press tightly integrated with modern prepress system.

Pressroom Family

Online Ink Key Control for
Multiple Printing Presses

InkScript Connect

Overview

Presetting your presses usually means adding a press computer which read CIP3 files. Most printers with older presses do not have this function and their only choice is to set all the ink value by hand. Now with InkScript Connect and InkScript Connect Loop, your Ink Control unit can now become an online unit to the front end system, receiving CIP3 data automatically. InkScript Connect communicates with most common Ink Control unit directly and turns your presses into a modern production workflow. The IS Connect Loop even enables the automatic measurement and evaluation of control strips, as well as the continuous transmission of computed correction value directly to presses.

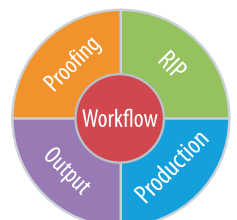
Highlights

- Direct Connection for Heidelberg and MAN Roland
- Replace magnetic strip by safety online transmission
- Enable calibration on ink linearization and ink duct values
- Easier for Job Retrieval
- Support printing machines from nearly all manufactures
- User friendly, run on windows platform
- Support IS Connect Loop option
 - Faster color evaluation on press console
 - replace Heidelberg/MAN Roland's interface card
 - replace magnetic strip readers by safety data transmission
 - enable calibration on ink linearization and ink duct values
 - user friendly, run on windows platform
- Tightly integrate with Express InkScript and WorkFlow

compose

An Open Future

www.compose.com.hk www.compose.co.uk www.composeusa.com



What if my presses cannot accept CIP3/4 online?

InkScript Connect is a powerful solution to link-up most of common press console to receive Ink Key preset value via Ethernet. It runs on an independent PC and provides an enhanced interface connector to link-up your presses with modern production workflow. IS Connect accepts the calculated data from InkScript and converts them into specific machine format for presetting the ink keys in all heterogeneous environments.

What is InkScript Connect?

Direct Connection for Heidelberg and MAN Roland

IS Connect's interface takes on the function of Heidelberg's Job Memory Card or MAN Roland's Chipcard and connects the machine control station via Ethernet to prepress. Ink key values are brought into line with individual printing conditions by the software package supplied, converted to the specific machine format, and saved online to the machine control system via IS Connect.

Replace magnetic strip by safety online transmission

IS Connect's interface provides a secure transmission of preset data to the machine control station. It replaces the magnetic strip/tape units normally used on Akiyama, Komori, Mitsubishi, and Planeta machines, and prevents the associated risk of errors from tedious handling of sensitive magnetic strips.

Advance Ink Key's Linear Calibration on IS Connect

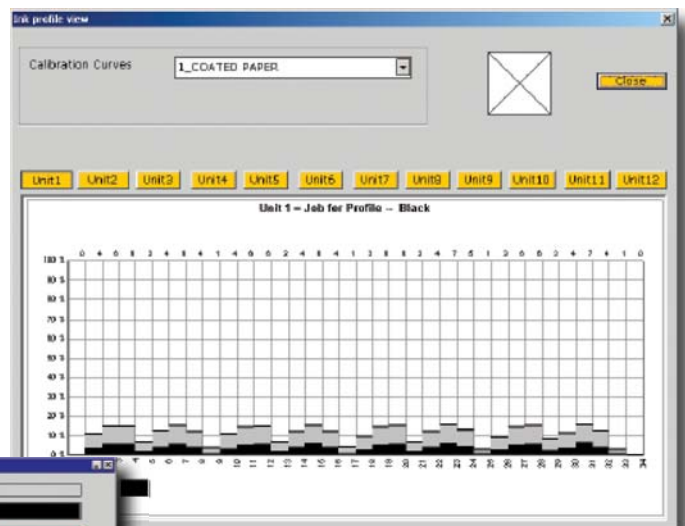
Each IS Connect option comes with a IS Connect software for converting and adjusting the calculated preset data into actual ink key values. IS Connect offers advanced color calibration functions such as adjustment of linearization (Ink Keys and Ductors), preview of Ink Zone values and print job, duct roller/ink sweep control, and much more, which enables for continuous process optimization.

Easier for Job Retrieval

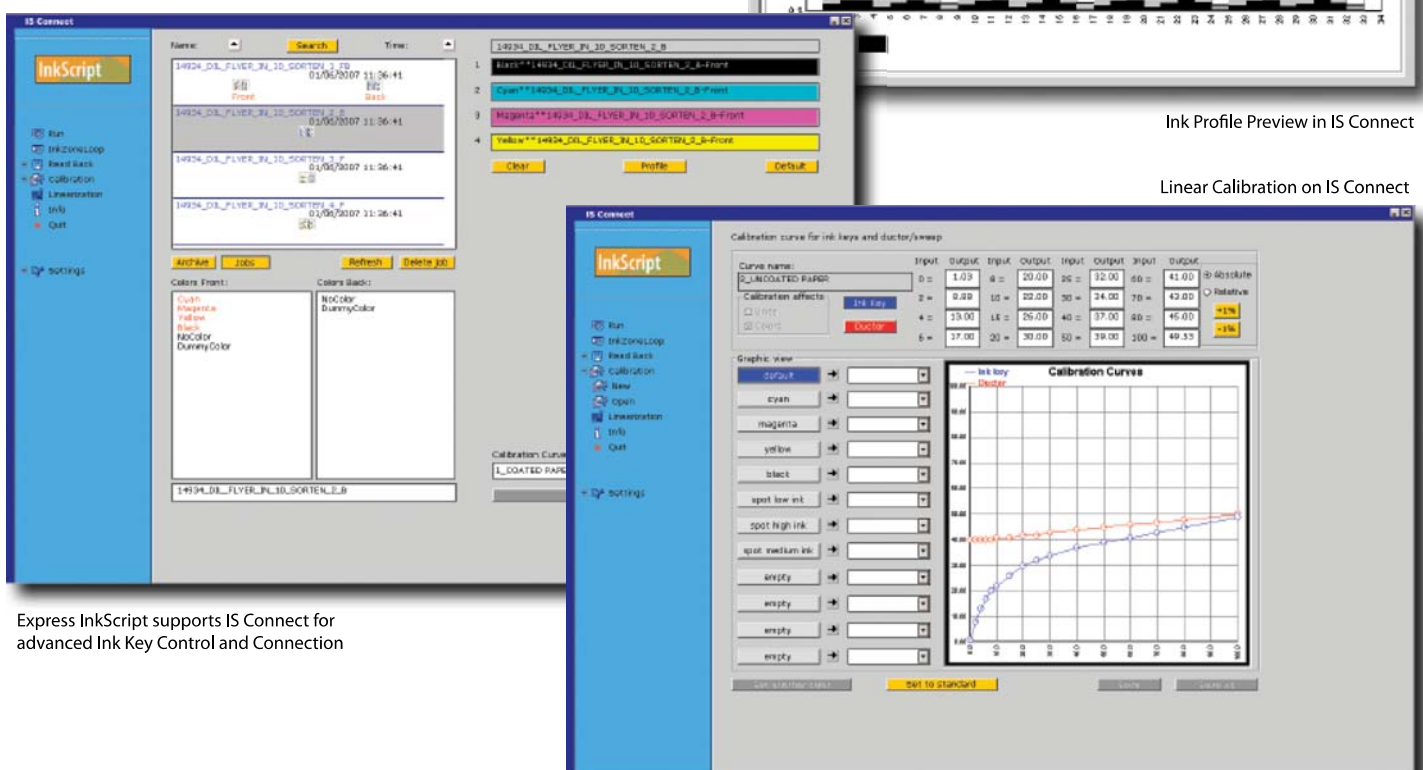
IS Connect minimizes the set-up times from the adjustment of the calculated preset data to the actual ink zone values set on the printing machine. Individual jobs can be copied from the control station back to the computer for repeat orders.

Support printing machines from nearly all manufactures

IS Connect works with a wide range of printing machines consoles from nearly all manufactures, including Heidelberg, MAN Roland, Akiyama, Komori, Mitsubishi, Planeta (Fuji and WPC), KBA, Komori, Ryobi, Eltromat, and GMI.



Ink Profile Preview in IS Connect



Linear Calibration on IS Connect

Express InkScript supports IS Connect for advanced Ink Key Control and Connection

Technical Support List - IS Connect

Manufacturer	Type	Model
Heidelberg	Sheetfed	Printmaster PM/GTO 52, Printmaster PM/Speedmaster SM 52, Speedmaster SM 72, Printmaster PM/Speedmaster SM/CD 74, Speedmaster SM/CD 102, Speedmaster XL 105, vintage machines (MO).
	WEb	Harris/Heidelberg M600
	Console	Heidelberg CPC 1.02, CPC 1.03, CPC 1.04 and CP 2000
MAN Roland	Sheetfed	Roland 200, 300, 500, 600, 700, 800, 900, 900XXL, vintage machines (Favorit, Rekord)
	Console	MAN Roland RCI I, II and III
KBA	Sheetfed	Rapida 74, Rapida 105, Rapida 130, Rapida 142, Rapida 162, Rapida 185, Rapida 205
	Console	Colortronic, Ergotronic
Komori	Sheetfed	Lithrone 20/25/26/28, Lithrone 32, Lithrone 40/44, Lithrone 50, vintage machines
	Console	Komori PQC Console and/or Press Station, K-Station
Mitsubishi	Sheetfed	Diamond 1000, 2000, 3000, 4000, 5000, 6000, 1X, 2X, 3X, 4X, 5X, 6X, vintage machines
	Console	Mitsubishi Console
Planeta	Sheetfed	Varimat, Variant, Variomat 17, 24, 26, 27, 28, 33, 36, 37, 42, 44, 46, 47, 48, 50, 54, 56, 57, 58, 64, 66, 67, 76, 77
	Console	Fuji Varicontrol/Variocontrol & Web Printing Controls (WPC)
Ryobi	Sheetfed	522, 524, 525, 526, 684, 685, 686, 688, 6810, 754, 755, 756, 758, 7510
	Console	Ryobi PCS-G printing control system
Sakurai	Sheetfed	Oliver 2102EPII, 475, 575, 675, 466, 566, 666, 458, 558 (SD & SDP, SI & SIP), vintage machines
	Console	SCC Sakurai Color Console, Type I & Type II
Akiyama	Sheetfed	Jprint, Bestech, eXtreme, 26, 28, 29, 32, 40, 44 vintage machines
	Console	Akiyama Console
Eltromat	Sheetfed/web	All printing machines using the Eltromat console can be connected
	Console	Eltromat FFS console (Offcon I, II and III)
GMI Microcolor	Sheetfed/web	All printing machines using the GMI Microcolor console can be connected
	Console	GMI Microcolor console

Please contact our sales representative for further support list which are not in above.

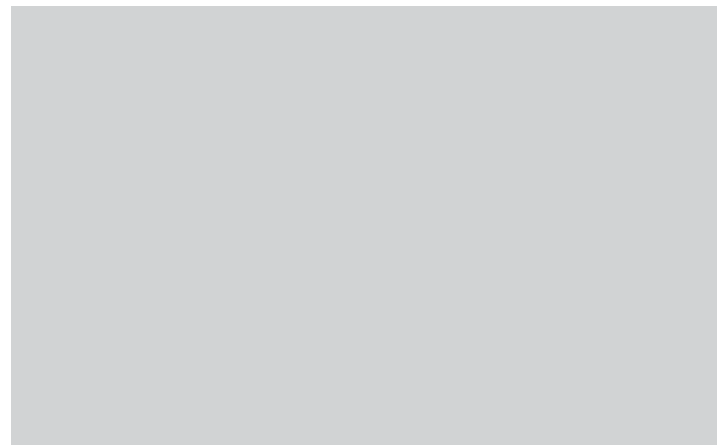
System Requirements

Recommended system

- CPU: Intel Pentium IV, 3.x Ghz
- RAM: 2 GB RAM
- Harddisk: 160 GB, SATA
- Operation System: Windows 2003 Server / SBS Server



IS Connect - Interface Connector for machine control station



Copyright © 2008-2009 Compose. All rights reserved.
 Compose logo is the trademark of Compose System Limited and its subsidiaries.
 All other brands and product names are trademarks or registered trademarks of their respective owners.
 All specifications and price changes are subject to change without notice.
 Compose cannot accept liability for any loss or damage arising from the use of information or particulars in this document.