



## Proofing Family

Accurate colour for  
consistent results

### Visual Proof V.5

## Highlights

### Visual Proof Standard

- Support Remote viewing of ripped pages from multiple RIPs across platforms of Mac & PC workstations.
- View pages whilst ripping without stopping output; concurrent viewing of ripping pages with stopping output.
- View pages before outputting by diverting pages from the RIP and checking them prior to output.
- Intelligent grouping of separations into pages, and pages into jobs automatically with least user intervention.
- Navigation window that enables you to see the whole page and navigate quickly around the image.
- Employ accurate color mixing thereby giving the user an accurate representation of color.
- Accurately displays traps and overprints.
- The ability to merge multiple separations into one.
- A unique Trap Black function that allows the user to easily check black traps.
- Variable scale factors that allow you to zoom in and out.
- Enable to rotate or mirror flip the viewed images.
- Progressive viewing, single or composite separations.
- Support Harlequin RIP standards such as TIFF and pagebuffer formats, on all Harlequin RIPs from 3.x upwards.

**compose**

Visual Proof Standard is an entry-level prepress soft-proofing product that allows for easy tracking, viewing and checking of ripped jobs prior to output. It provides a significant improvement in proofing jobs before output. Built on Visual Proof Standard, Visual Proof Professional offers higher color accuracy on prepress soft-proofing that includes a larger tool set and significant additional features. It provides a post-RIP workflow with a number of extremely sophisticated capabilities. The Color Management capabilities in particular, significantly removes or reduces the need for slow and costly hard-copy proofs.

### Visual Proof Professional

- Report the Ink Coverage information of each separation.
- Additional Grid & Guide Lines allow alignment easily.
- Automatic Rotate & Mirror pages for correct viewing.
- View Black Tools stand out light inks make viewing easier and show any screen rosettes or moire.
- Ink Limit Tool
  - Max Ink (TAC) show where job image exceeds ink limit
  - Min Ink show where dots are too small in a separation
- Advanced View Tools
  - emulate dot gain of 1-bit output
  - magnify an area around the cursor position by 8x
  - compare two separations that are different
- Emulate paper color to a user specified color
- Advanced Measurement Tools
  - measure the object distances, angles, width and height
  - measure the screens angle and frequency
  - measure the RGB color/density at a selected point or area.
- Print the separations being viewed to a local printer
- Enables to search multiple RIPs to locate a requested job.



## An Open Future

[www.compose.com.hk](http://www.compose.com.hk) [www.compose.co.uk](http://www.compose.co.uk) [www.composeusa.com](http://www.composeusa.com)

## Introduction

Visual Proof is a specialized, easy to use, and high performance pre-press soft proofing tools for doing all the things that you used to do in proofing. With Visual Proof, you can check content, page size, blank plates, screens, moiré, overprints, size and placement of step-n-repeats, front-to-back registration, seams, traps, black traps, overprints, over inking, under-inking (small dots in flexo), densities, front-to-back duplex alignment, and you can also do double burns, delete blank plates, merge plate data, rotate plate data, produce a proof, backup plate data, etc...

## Features and Benefits

### Integration

Visual Proof integrates with some of the industries most powerful RIPs and workflows to produce a virtual dot for dot proof of the actual data meaning what you see is what you get.

### Versatile

Visual Proof offers a versatile solution that will integrate with both TIFF and Harlequin workflows while being available on both MAC and PC Platforms. Visual Proof allows users to remotely view and approve output from multiple RIPs prior to imaging.

### Enhance System Throughput

Visual Proof can dramatically enhance total system throughput by allowing you to preview Ripped files without halting the RIP from processing other files and outputting.

### Check Files On The Fly

Visual Proof simply open 1-bit TIFF imposition separations and Harlequin PageBuffer files on the fly. Once you are happy that the image is fine, you can send files for final output to ink-jet proofs, digital press, and film or plates saving valuable time and materials.

### Remote Client Stations

Operators can view Ripped files from their own desktop ensuring every job is correct prior to imaging. Client stations can easily roam ripped data, zoom in and out to check type, traps, measure screen angles, density, and more from anywhere on the network while their RIP continues to process other files.

### Merge Separations & Print Soft Proofs

Amongst the additional features is the ability to merge separations (such as P Blue CV & P Blue CVC) and most significantly the ability to also print what has been soft-proofed. This allows to produce a content proof which can be signed of and included in the job bag of pressman to be used when the job is printed on press.

### Sophisticated User Friendly Tool Set

Visual Proof provides sophisticated (yet easy to use) tools for proofing jobs, which greatly increases the ability to check output prior to imaging. In doing so, users of Visual Proof Professional in the pre-press department can detect many more problems before exposing film, burning plates or worse still printing pages, thus saving valuable time and money.

## Innovative Color Management Solution

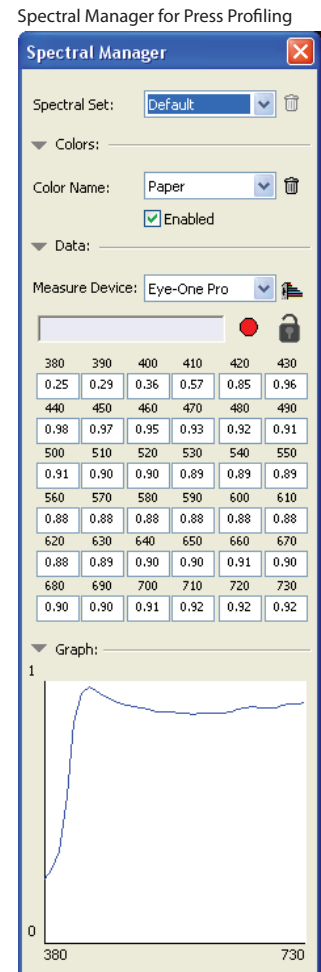
The Color Management solution in Visual Proof is a completely new innovative method for generating color accurate soft proofs. It is easy to understand, easy to use and fast, which simply involves profiling the monitor, spectrally profiling the press, and profile adjustment.

### Simple Press Profiling

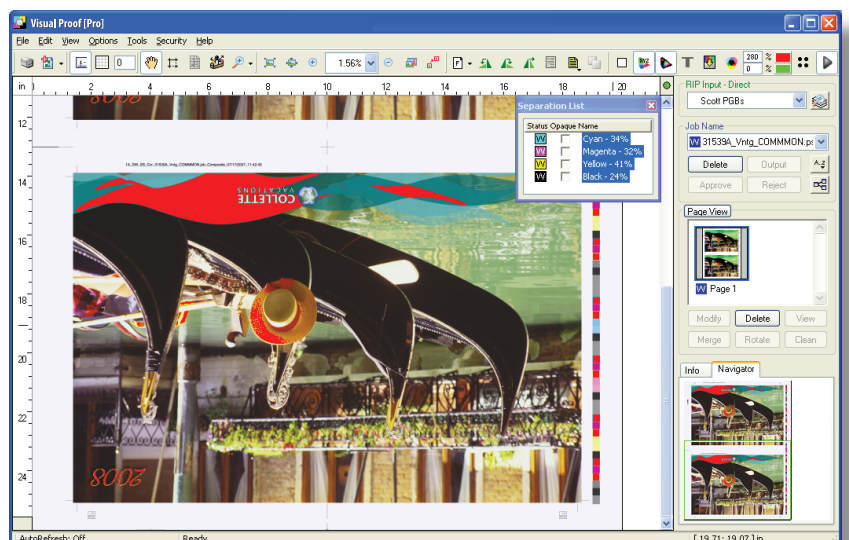
Compare with traditional press profiling (ICC Profile), the process of spectrally profiling is very simple. It only taking a previously printed job and measuring only a small number of colors from the color bar around the outside of the job. No special test chart is required, it saves time and money as the press can continue printing real jobs. In addition, since only a small number of colors need to be measured, this can be done by hand in less than one minute with an inexpensive spectro-photometer.

### Powerful Gamut Check Tool

It may not be possible to accurately display all the colors in a job because some of them might be out of gamut for the monitor you are using. Knowing this is vital when signing off on a proof. With hard-copy proofing there is no way of knowing if any of the colors you are seeing are out of the gamut of the printer. Visual Proof however has a powerful Gamut Check Tool which allows you to instantly see which colors are out of the gamut of the monitor.



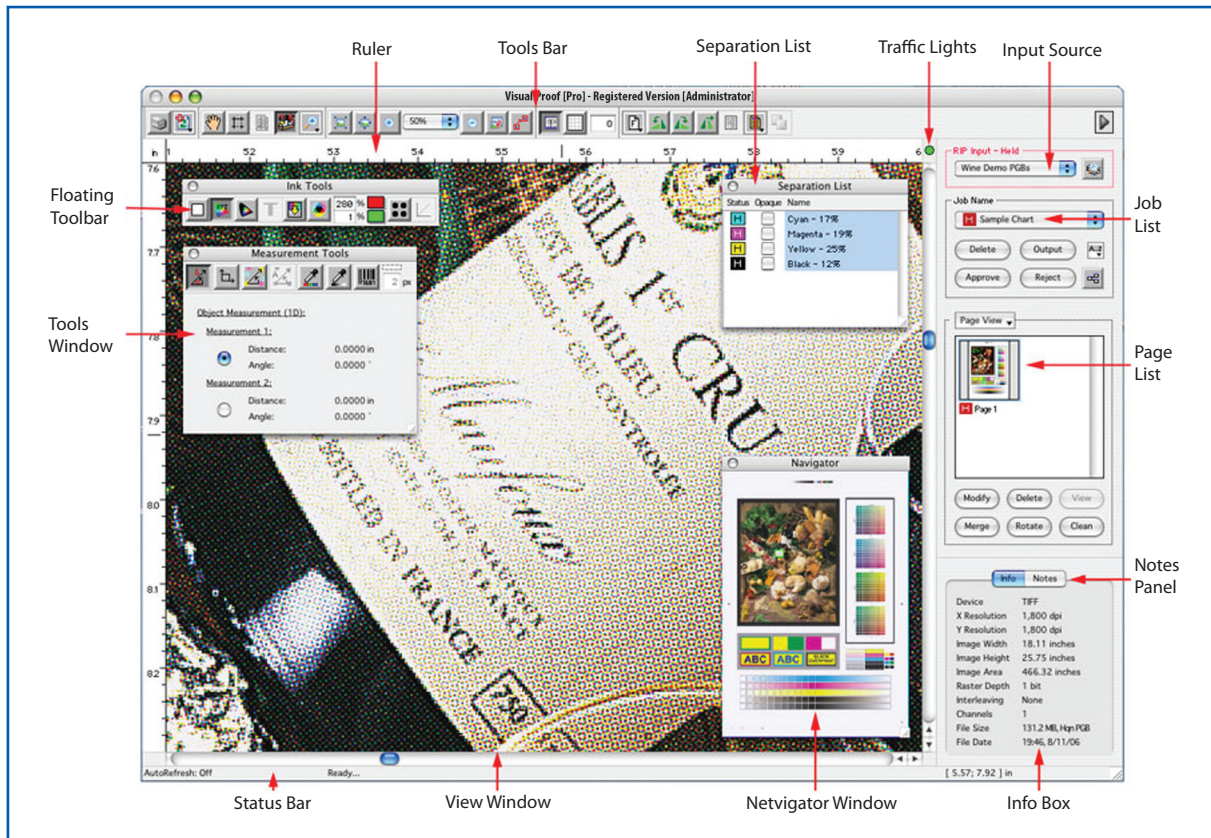
Simply select the Gamut Check Tool from the main tools bar and Visual Proof will display any colors that are out of gamut in red



# Visual Proof Products Comparison

FEATURE	EXPLANATION	PGB	Std v5	Pro v5
<b>FORMATS</b>				
PGB Input (Harlequin)	Configures a Harlequin RIP for viewing (internal RIP) PGB images.	Y	Y	Y
TIFF Input	Configures an Input Folder for viewing TIFF images (both tiled and striped).		Y	Y
RAS Input (Compose)	Configures an Input Folder for viewing Compose RAS images		Y	Y
TIFF Open	Dynamically opens the TIFF files in a given folder for viewing.		Y	Y
<b>JOB INFO</b>				
Device	Displays the output device name.	Y	Y	Y
Resolution	Displays the horizontal and vertical resolution of the image.	Y	Y	Y
Dimensions	Displays the width, height and area of the image.	Y	Y	Y
Format	Displays the raster depth, interleaving style and channels of the image.	Y	Y	Y
File Info	Displays the size of the image (may be compressed), its compression format and when it was created.		Y	Y
Ink Coverage	Calculates the total ink coverage of each separation.		Y	Y
Page Thumbnails	Displays each page in a job using a thumbnail (a small image of the actual page).		Y	Y
<b>POSITIONAL TOOLS</b>				
Navigator	Shows the position of the main view in a reduced (resizable and floatable) view.	Y	Y	Y
Position	Displays the position of the cursor in the image, both in the ruler and the status bar.	Y	Y	Y
Rulers	Shows the position of the view in the image and allows for simple measurements.	Y	Y	Y
Ruler (Origin) Adjustment	Move/set the origin of the rulers to any required position (e.g. bottom right of image).		Y	Y
Grid Lines	Displays a user specifiable grid of lines over the image to aid with visual alignment.		Y	Y
Guide Lines	Add user-positioned horizontal and vertical guide lines to check alignment.		Y	Y
<b>MOVEMENT TOOLS</b>				
Scroll Bars	Scroll around using the arrows, clicking in the scroll bar or by dragging them.	Y	Y	Y
Hand Mode	Move the image around by dragging it with the mouse down.	Y	Y	Y
Navigator Click	Move the image to a desired location by clicking in the Navigator.	Y	Y	Y
Navigator Drag	Move the image around by dragging the main view (green box) in the Navigator.		Y	Y
Navigator Select	Select an area in the Navigator to view that area fully in the main view.		Y	Y
<b>ZOOM TOOLS</b>				
Actual Pixels	Changes the zoom level so that the exact pixels of the image are viewed (1:1).	Y	Y	Y
Best Fit	Changes the zoom level so that the image fits best in the current view.	Y	Y	Y
Zoom In / Out	Zooms the image in / out by a single level, making it twice / half the size.	Y	Y	Y
Zoom Level Select (reduce)	Select a zoom level from one of 50%, 25%, 12.5%, etc..., reducing the size of the original image.	Y	Y	Y
Zoom Level Select (enlarge)	Select a zoom level from one of 800%, 400% & 200%, enlarging the size of the original image.		Y	Y
Zoom In / Out / Area Mode	Changes the current mode to zoom in / out / area mode, enabling multiple zooms.		Y	Y
Navigator Zoom	Having selected an area in the Navigator, zooms so as to fit this in the main view.		Y	Y
Magnifier Window	Magnifies an area around the current cursor position by 8x.		Y	Y
Down Sample Server	Performs background down-sampling of images for immediate zooming.		Y	Y
<b>ORIENTATION TOOLS</b>				
Rotate Left / Right	Rotates the image by 90 degrees anti-clockwise / clockwise.	Y	Y	Y
Mirror Flip	Mirror Flips the image horizontally.	Y	Y	Y
Proportional View	Adjusts the resolution for non-matching X & Y resolutions so that the image is shown in proportion		Y	Y
Automatic Rotate & Mirror	Automatically rotates and mirror flips pages as required for correct viewing.		Y	Y
<b>VIEW TOOLS</b>				
Negative	Inverts the input channels of the image so as to view a negative image correctly.	Y	Y	Y
Automatic Negative	Automatically inverts the input channels of the image (if required) so as to view a negative image.		Y	Y
Trap Black	Reduces any black channels of the image to 50% to view black traps.	Y	Y	Y
View Black	Sets all channels of the image to black, so as to view screening rosettes or moiré.		Y	Y
Ink Limits - Max Ink (TAC)	Displays areas of the image in a user specified color that exceed an ink limit.		Y	Y
Ink Limits - Min Ink	Displays areas of a separation in a user specified color that are below a threshold.		Y	Y
Dot Gain (1 bit data)	Physically emulates dot gain of 1-bit output showing dot gain and dot loss (fast scan).		Y	Y
Tone Curve (8 bit data)	Applies a Tone Curve to 8-bit output to invert any applied during the RIPping process.		Y	Y
Compare Separations	Compares two separations displaying areas that are different.		Y	Y
<b>COLOR TOOLS</b>				
Color Manager	Creates a database of colors used to change the view color of jobs or separations.	Y	Y	Y
Enable/Disable Color	Adds or removes separations from those being viewed whilst viewing.	Y	Y	Y
Change Color	Changes the color of a single separation whilst viewing.	Y	Y	Y
Change All Colors	Changes the color of all separations with the same color name whilst viewing.	Y	Y	Y
Paper Color	Changes the color of the paper (background color) to a user specified color.		Y	Y
Opaque Inks	Views a color using opaque ink (such as White or Gold) instead of using transparent ink.		Y	Y
<b>COLOR MANAGEMENT</b>				
Color Manage	Enables Color Management which gives a color accurate view of the image.			Y
Gamut Check	Checks which colors being viewed are out of gamut for the monitor, displaying them in red.			Y
Spectral Manager	Provides spectral profiling for different paper stock, inks and presses.			Y
Light Manager	Provides for color matching of jobs under different lighting conditions.			Y
<b>MEASUREMENT TOOLS</b>				
Objects (1D)	Measures the distance and angle between two points and therefore of objects.			Y
Objects (2D)	Measures the width and height between two points and therefore of objects.			Y
Screens	Measures a screens angle and frequency by selecting the centres of two dots.			Y
Screens (Auto)	Automatically measures the screen angle and frequency in multiple separations.			Y
Color	Measures the RGB color either where the mouse is or of a selected area.			Y
Density	Measures the density (%) either where the mouse is or of a selected area.			Y
Barcode	Reads an EAN/UPC barcode to verify it, additionally showing the BWR factor and Scaling percentage.			Y
<b>PRINTING &amp; EXPORT</b>				
Copy-n-Paste	Copies the Navigator window (Docked or Floating) to the Clipboard.		Y	Y
Print	Prints the separations being viewed to a local printer (including enabled tools).			Y
Print One	Prints one copy of the separations being viewed to a local printer (including enabled tools).			Y
Print View	Prints the current view image at 72 dpi to a local printer.			Y
PDF Export	Export (via print - requires 3rd party products on PC) the separations being viewed to a PDF file.			Y
<b>MISCELLANEOUS TOOLS</b>				
Full Screen	Makes the application run in Full Screen Mode, providing a larger area for viewing.		Y	Y
Selection Manager	Creates a database of Selection Sets used to view sub-areas in different flat schemes.		Y	Y
Selection [Set] Tool	Creates multiple sub-areas in a flat for subsequent viewing (useful for printing pages in flats too).		Y	Y
Selection View	Views the currently selected sub-area (hiding the rest of the flat), with fast switching of selected area.		Y	Y
Cylinder Seam	Views the image side by side either vertically or horizontally, to check a wrap-around seam.			Y
Duplex View	Views the Front and Back of a Duplex Page together, with controls over Paper Transparency.			Y
Scum Dot Tool	Automatically removes single pixels from separations, preventing Scum Dots forming on press.			Y
<b>MISCELLANEOUS FEATURES</b>				
Job Builder	Builds a complete list of jobs, pages and separations from a set of images.	Y	Y	Y
Job Status	Shows the status of jobs - Input, Held, Media Saving, Approved, Rejected, Waiting and Output.	Y	Y	Y
Site Accounts	Allows for different sites, with control over which Inputs (and sub-inputs) can be viewed. [optional]		Y	Y
User Accounts	Allows for different users, with control over which operations (e.g. Delete) can be performed. [optional]		Y	Y
Job Alerts	Alerts the user when a new job arrives, or when a job becomes old (and hasn't been output).		Y	Y
Job Hold (PGBs only)	Configure each Page Setup in the RIP to Hold jobs for approval prior to Output.	Y	Y	Y
Job Notes	Allows the user to make notes about the job, for example why it was rejected. [optional]		Y	Y
Approve Job	Marks a Job as Approved, for subsequent Output (or Deletion).		Y	Y
Reject Job	Marks a Job as Rejected, for subsequent Deletion (or Approval).		Y	Y
Delete Job	Deletes a complete job (including those in the Harlequin RIP for a PGB Input).	Y	Y	Y
Delete Page/Separation	Deletes selected pages and separations from a job (including those in the Harlequin RIP for a PGB Input).	Y	Y	Y
Output Job	Sends the job to be output (either to the RIP or Output folder).	Y	Y	Y
Modify Separations	Modifies the color (e.g. P Blue CV to P Blue CVC) and/or job name of a separation.		Y	Y
Merge Separations	Merges multiple separations (e.g. P Blue CV & P Blue CVC) into a single separation.		Y	Y
Rotate Separations	Rotates multiple separations by either 0, 90, 180 or 270 degrees with a (optional) final mirror.		Y	Y
Sort Jobs	Sorts the jobs in the current Input by date, name or (output) status.		Y	Y
Find Job	Searches all Inputs for a job with a given name (or part of a name).		Y	Y
Backup Jobs	Copies a job to a backup folder on output, allowing for simple archiving.		Y	Y

# Visual Proof Version 5 - Professional



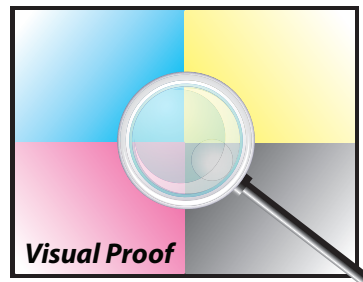
## System requirements

### PC Environment

CPU: Dual Xeon 2.8GHz or higher  
 Memory: 2GB RAM  
 Hard Drive: 80GB SATA Disk  
 OS: Windows 2000 Professional or Server  
 Windows 2003 server.

### Mac Environment

CPU: Dual G5 2GHz or higher  
 Memory: 2GB RAM  
 Hard Drive: 80GB SATA Disk  
 OS: OS 10.4



### Monitor Profiling System

XRite: Eye-One Display or Eye-One Pro

### Monitor

Eizo: ColorEdge Series or higher



Copyright © 2008 Compose. All rights reserved.  
 Compose logo is the trademark of Compose System Limited and its subsidiaries.  
 All other brands and product names are trademarks or registered trademarks of their respective owners.  
 All specifications and price changes are subject to change without notice.  
 Compose cannot accept liability for any loss or damage arising from the use of information or particulars in this document.