

pressSIGN

Pressroom Family

Accurate color on press

pressSIGN



ISO 12647-2, ISO 12647-3, GRACoL G7, SWOP

Intelligent Printing

pressSIGN tests and controls the printing process to give consistently accurate color and provides analysis of press performance.

Using pressSIGN dramatically reduces make-ready times and increases print quality. Matching international printing standards such as ISO 12647 is easy.

There are 4 version of pressSIGN, **pressSIGN standard**, **pressSIGN-Pro**, **pressSIGN-Trends**, **pressSIGN-PrintBuyer**. See the pressSIGN compatibility chart on next page and choose the version that suits your needs.

Every pressSIGN reading is written to a database allowing quick and immediate access to all past jobs. Jobs can be selected by any combination of criteria such as press, operator, date, time, run length, make ready time, print standard and client. Comments can be added to any job and searched for on the database making it easy to see the impact of any changes made on the press such as new consumables or settings.

Highlight

- Easy to adjust each ink key density to achieve the lowest Delta E
- Create and adjust plate curves
- Pantone® Libraries for 5 or 6 color printing
- Compensation for the color shift as ink dries (dry back)
- Detailed pdf report for measurements or production report
- All International Printing Standards built-in
- Reduces make-ready times
- Works with the X-rite Eye-One
- Easy to get the right settings

compose

An Open Future

www.compose.com.hk www.compose.co.uk www.composeusa.com



pressSIGN-Pro & pressSIGN-Trends

pressSIGN-Pro measures and controls the printing process for up to 6 color printing to ensure accurate color on press. pressSIGN-Pro features complete set of analysis tools to help improve press and operator performance identifying issues of wastage and quality.

pressSIGN-Pro and pressSIGN-Trends allow you to import multiple jobs and analyze all aspects of the production process. For example, all today's jobs from one press can be imported and analyzed by overall score, dot gain, gray balance, primary score, overprint, trapping and make ready times. pressSIGN-Pro and pressSIGN-Trends help users to understand how their presses are performing, and how to improve print quality. With pressSIGN-Trends, watch the performance of the press from the office as each reading appears in the database. pressSIGN really does mean intelligent printing.

Set up jobs in pressSIGN-Trends with job details including company name, client, press target, run length and allocate the job to press and operator.

Operator opens pressSIGN-Pro and sees only his jobs. He opens the next job and everything is prepared including any required instructions. The pressSIGN-Pro operator can see the overview and how to adjust each ink key across the press.

The pressSIGN-Trends administrator can view all jobs printed, compare presses, operators or shift performance, see jobs currently on press and update plate adjustment curves.

Adjust density correctly

pressSIGN's unique algorithms create the correct density setting for each color based on the actual paper, ink and press. House densities can be a rough guide, but pressSIGN's predictions are based on real time information produced from the press.

The easy-to-read graphical interface shows how to adjust the ink density for each primary color making it easy to see what density settings to apply. pressSIGN-Pro provides this information for each ink key, while the standard edition of pressSIGN gives you an average setting for the sheet. In addition you can quickly see the range of densities in target and the closest measured density.

This means that hitting the right color is quick, easy and objective.

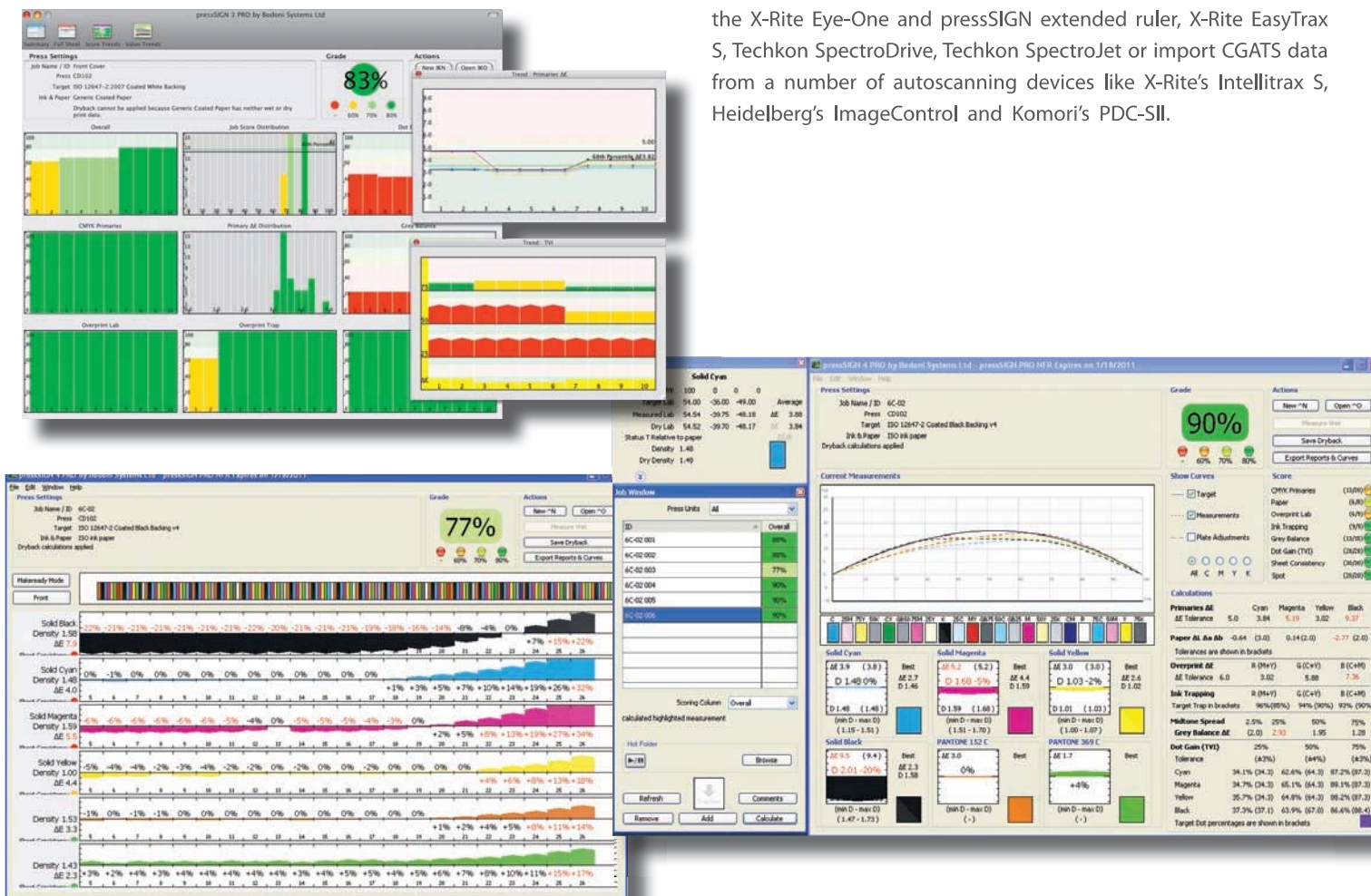
Plate adjustment curves

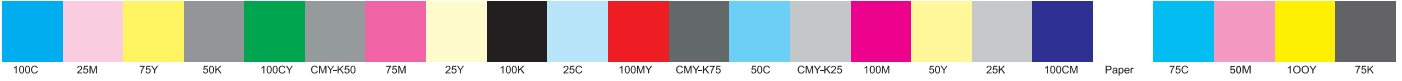
If the dot gain curve does not meet the standard then pressSIGN provides the correct plate adjustment curve. Export the adjustment curve directly into the most popular platesetter and filmsetter RIPs.

Consistency score

pressSIGN-Pro provides a consistency score for the colors across the sheet. Reading the full width of the press sheet provides more accurate data for assessment of quality and also for updating plate curves.

Reads the full width of the press sheet with pressSIGN-Pro using the X-Rite Eye-One and pressSIGN extended ruler, X-Rite EasyTrax S, Techkon SpectroDrive, Techkon SpectroJet or import CGATS data from a number of autoscanning devices like X-Rite's Intellitrax S, Heidelberg's ImageControl and Komori's PDC-SII.





pressSIGN control strip

pressSIGN scoring system

Meeting the standard on every press sheet can be difficult. pressSIGN provides a 'traffic light' scoring system making it easy to identify press sheets that reach your standard.

Once your own scoring system is set up you can export this file and send it to other users.

pressSIGN label

Attach the pressSIGN Pass label to the OK sheet to show your customers that their printed sheets pass the standard.

pressSIGN pdf report

The pressSIGN pdf report provides all the information you need about the color performance of the press.

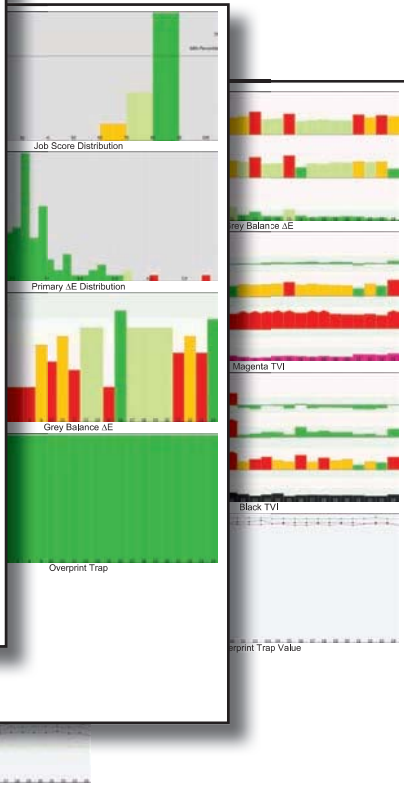
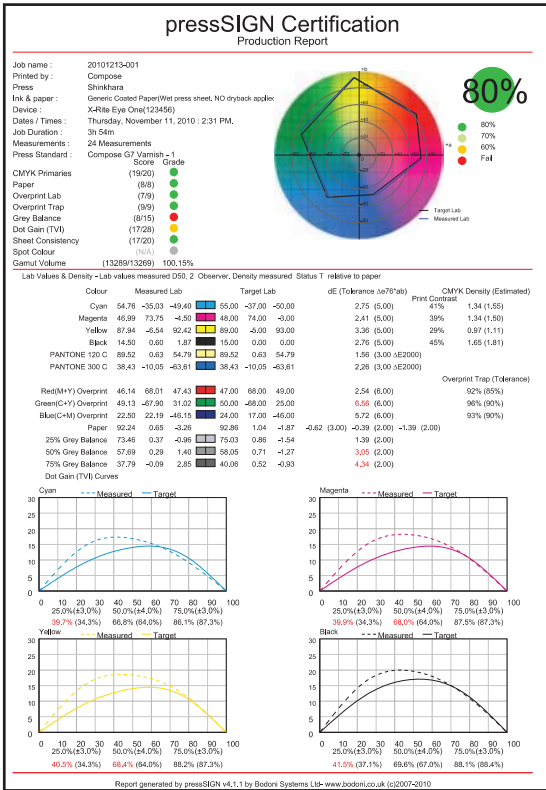
Density, Lab values, dot-gain curves, and scoring are included in the pdf. Keep this report in the job bag for client inspections and for reprints.

CMYK Primaries (14/20)
 Paper Colour (5/5)
 Overprint ΔE N/A
 Ink Trapping (12/12)
 Grey Balance (15/15)
 Dot Gain (TVI) (28/28)

93%

Job : ISO Test Print
 Press : Heidelberg
 Printed by : Compose System Ltd

ISO Sheeted Gloss Black Backing Scored
 Thursday, 15 March 2007 16:59
 pressSIGN by Compose Systems Ltd



Measurement	Date / Time	Control	CMYK Primaries	TVI	Grey Balance	Overprint Lab	Overprint Trap	Paper	Sheet Consistency	Spot
1	07/24/2008 01:00	11/11/2010 2:31 PM	60%	41%	112%	92%	95%	93%	112%	92%
2	07/24/2008 01:02	11/11/2010 2:49 PM	61%	41%	112%	92%	95%	93%	112%	92%
3	07/24/2008 01:04	11/11/2010 3:07 PM	60%	41%	112%	92%	95%	93%	112%	92%
4	07/24/2008 01:06	11/11/2010 3:24 PM	60%	41%	112%	92%	95%	93%	112%	92%
5	07/24/2008 01:08	11/11/2010 3:42 PM	60%	41%	112%	92%	95%	93%	112%	92%
6	07/24/2008 01:10	11/11/2010 4:00 PM	60%	41%	112%	92%	95%	93%	112%	92%
7	07/24/2008 01:12	11/11/2010 4:18 PM	60%	41%	112%	92%	95%	93%	112%	92%
8	07/24/2008 01:14	11/11/2010 4:36 PM	60%	41%	112%	92%	95%	93%	112%	92%
9	07/24/2008 01:16	11/11/2010 4:54 PM	60%	41%	112%	92%	95%	93%	112%	92%
10	07/24/2008 01:18	11/11/2010 5:12 PM	60%	41%	112%	92%	95%	93%	112%	92%
11	07/24/2008 01:20	11/11/2010 5:30 PM	60%	41%	112%	92%	95%	93%	112%	92%
12	07/24/2008 01:22	11/11/2010 5:48 PM	60%	41%	112%	92%	95%	93%	112%	92%
13	07/24/2008 01:24	11/11/2010 6:06 PM	60%	41%	112%	92%	95%	93%	112%	92%
14	07/24/2008 01:26	11/11/2010 6:24 PM	60%	41%	112%	92%	95%	93%	112%	92%
15	07/24/2008 01:28	11/11/2010 6:42 PM	60%	41%	112%	92%	95%	93%	112%	92%
16	07/24/2008 01:30	11/11/2010 7:00 PM	60%	41%	112%	92%	95%	93%	112%	92%
17	07/24/2008 01:32	11/11/2010 7:18 PM	60%	41%	112%	92%	95%	93%	112%	92%
18	07/24/2008 01:34	11/11/2010 7:36 PM	60%	41%	112%	92%	95%	93%	112%	92%
19	07/24/2008 01:36	11/11/2010 7:54 PM	60%	41%	112%	92%	95%	93%	112%	92%
20	07/24/2008 01:38	11/11/2010 8:12 PM	60%	41%	112%	92%	95%	93%	112%	92%
21	07/24/2008 01:40	11/11/2010 8:30 PM	60%	41%	112%	92%	95%	93%	112%	92%
22	07/24/2008 01:42	11/11/2010 8:48 PM	60%	41%	112%	92%	95%	93%	112%	92%
23	07/24/2008 01:44	11/11/2010 9:06 PM	60%	41%	112%	92%	95%	93%	112%	92%
24	07/24/2008 01:46	11/11/2010 9:24 PM	60%	41%	112%	92%	95%	93%	112%	92%

Printing Standards

Print to international or user defined standards pressSIGN is the most effective tool for matching any printing standard.

- Select any international standard:
- ISO 12647-2 Sheet-fed or web offset
 - ISO 12647-3 Newsprint
 - ISO 12647-4 Gravure
 - ISO 12647-6 Flexographic
 - GRACol G7 Sheet-fed or Web (SWOP)

Create a new standard from an imported CMYK ICC profile. Measure the press paper color and adjust the target based on the actual paper in use. Export the new ICC profile for use in proofing systems and design applications for a complete color matched system.

Use a measured press sheet to create a standard. This is ideal for print re-runs or capturing a press pass. Export the press standard to other users so that they can match your work.

Select the appropriate dot gain curve for CMY and separately for the black, then choose the type of backing on which you are

reading the press sheet. Finally, choose the default tolerances or set your own.

Once the standard has been selected then determine what you consider to be an acceptable pass for your press sheets. pressSIGN allows you to export the set up so other users can work to exactly the same settings.

pressSIGN control strip

pressSIGN will automatically generate the control strip depending on the selected print standard and according to press and ink key widths.

Read the press sheet wet and dry

pressSIGN adjusts for the color shift that takes place as the inks dry.

Predicting how the color appears when dry means you are giving the client exactly what is expected according to a verified proof.

pressSIGN Compatibility Chart

functions	Standard	Pro	Trends	Print-Buyer
standards <ul style="list-style-type: none"> ISO 12647-2, ISO 12647-3 ISO 12647-4, ISO 12647-6 GRACoL G7 import ICC profile / previous measurement user defined 	✓	✓	✓	✓
diagnostics <ul style="list-style-type: none"> density adjustments plate curve adjustments 	✓	✓	✓	
input data <ul style="list-style-type: none"> via X-Rite eye-one CGATS data via Intellitrac S, Komori PDCS, Heidelberg image control & others X-Rite EasyTrax S, TechkonSpec- trojet, Techkon Spectrodrive 	✓	✓		✓
measurement functions <ul style="list-style-type: none"> density dot area CIEL*a*b*/deltaE 	✓	✓		✓
import/export <ul style="list-style-type: none"> standards/measurements/dry back data/ICC profiles/color bar 	✓	✓	✓	✓
reports <ul style="list-style-type: none"> label pdf measurement report without curve info pdf measurement report with curve info pdf production report 	✓	✓	✓	✓
auto input <ul style="list-style-type: none"> scans for CGATS data to auto input into pressSIGN 	✓	✓	✓	✓
views <ul style="list-style-type: none"> summary view without density adjustment information summary view with density adjustment information full sheet view score trends view value trends view 				✓
production / make ready mode		✓		
spot color <ul style="list-style-type: none"> PANTONE® licence 	✓	✓	✓	✓
upload reports <ul style="list-style-type: none"> online or by email 	✓	✓	✓	✓

PANTONE®

Version 4 of pressSIGN provides the most accurate printing of 5 and 6 color jobs.

Working with spot colors is easy. Simply select from the PANTONE® libraries included, measure a swatch or type in a L*a*b* value. pressSIGN predicts the correct density adjustments to produce the best possible match to the target.

Select the PANTONE® color(s) required and measure the control strip. pressSIGN shows how to adjust the ink keys on all four, five or six colors.



pressSIGN PANTONE® licensed

pressSIGN can generate a PDF report showing how close the press was run to the standard, export tint data in several different formats as detailed below and print a simple pass /fail label.

System Requirements

Mac

Mac OS 10.5 or later
2 GB RAM
2 USB Ports (for Eye One & label printer)
Color Monitor: 1280 x 1024
X-Rite Eye-One

PC

Windows XP Pro, Win 7 Pro
2 GB RAM
2 USB Ports (for Eye One & label printer)
Color Monitor: 1280 x 1024
X-Rite Eye-One



Copyright © 2011 Compose. All rights reserved.
Compose logo is the trademark of Compose System Limited and its subsidiaries.
All other brands and product names are trademarks or registered trademarks of their respective owners.
All specifications and price changes are subject to change without notice.
Compose cannot accept liability for any loss or damage arising from the use of information or particulars in this document.